

Document No. RR 2010003

Publication, Duplication, or Retransmission Of This Document Not Expressly Authorized In Writing By Road Rover Is Prohibited.

### ► What You Need Before the Update



Update



Update\_S...



D6214TT\_E  
N\_H\_9\_H\_N  
8\_R\_V7.03

Step

1

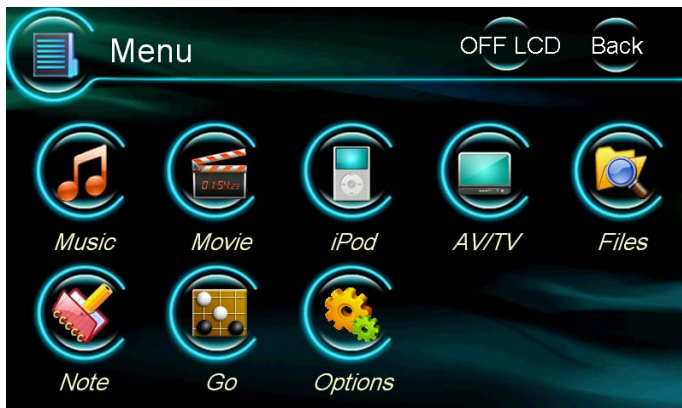
Put the update files into the root of SD card.



Step

2

Power on the unit.



Step

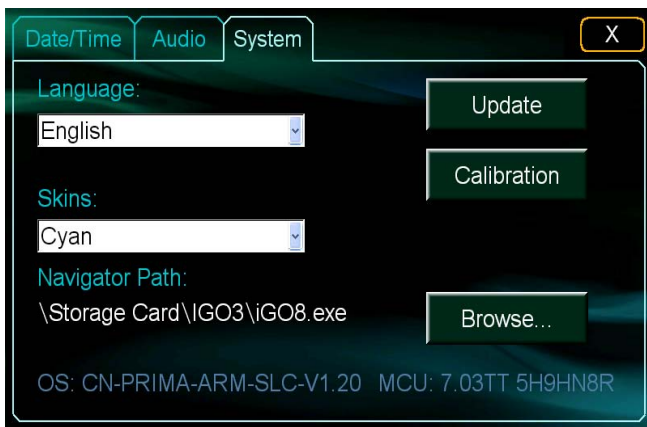
3

Click Menu icon to enter into the menu interface.



Step  
4

Click setting icon into this interface and then click system icon.



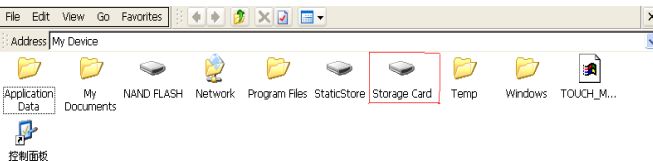
Step  
5

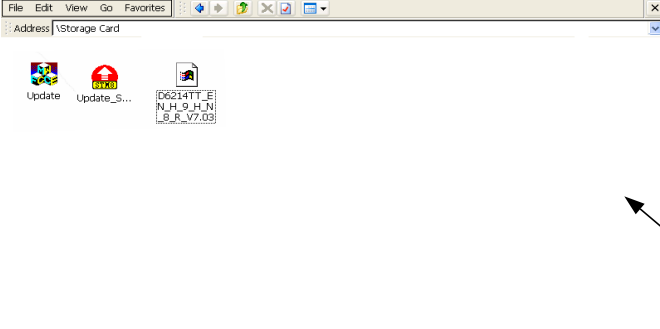
Click update icon you can enter into the Windows CE interface.



Step  
6

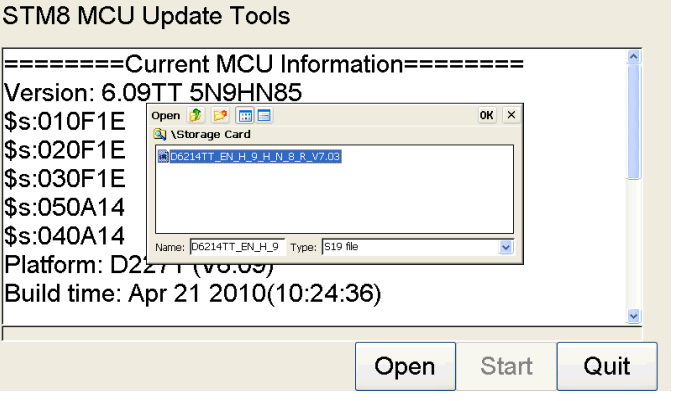
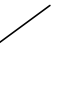
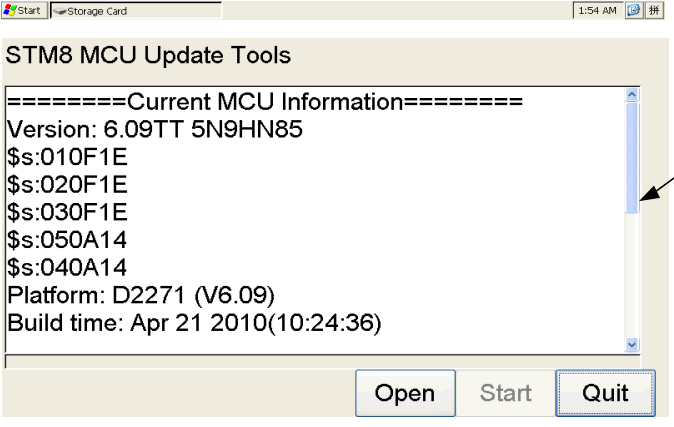
Double-click My Device and you'll see you SD card





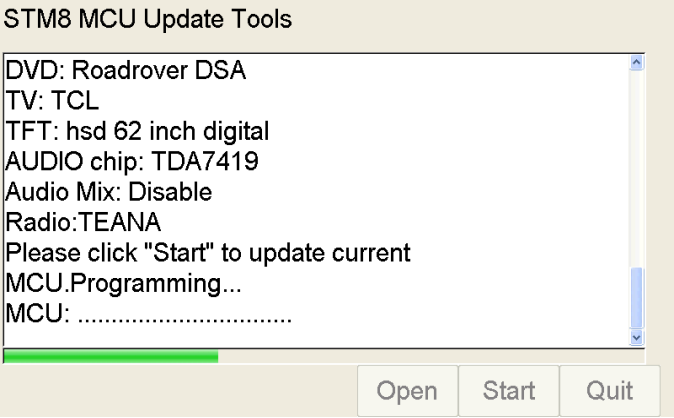
Step 7

Open the Storage Card and double-click the ST8 icon to go to update interface.



Step 8

Click Open icon to find out the update file you need and select it, then click OK.



Step 9

It will update automatically and when it finished, the unit will reboot by itself.

..... END .....