

Section I - Installation Preparation

Part Number: 08586-48010

Section I - Installation Preparation

Kit Contents

Item #	Quantity Req'd.	Description
1	1	Wire Harness
2	1	Microphone
3	1	Key Cylinder Switch
4	1	GBS ECU
5	1	Security ECU Mounting Bracket
6	1	GBS ECU Mounting Bracket
7	1	Status Monitor
8	1	Security ECU

Hardware Bag Contents

Item #	Quantity Req'd.	Description
1	1	Large Foam Tape Strip (2pcs.)
2	7	Small Foam Tape Strip
3	15	Small Wire Ties
4	1	Bolt
5	2	Warning Labels
6	1	Owner's Manual
7	1	Warranty Card

Additional Items Required For Installation

Item #	Quantity Req'd.	Description
1		

Conflicts

Note: Must not be installed in vehicles with factory TDS.

Recommended Tools

Safety Tools	
Safety Glasses	
Safety Gloves	(Optional)
Vehicle Protection	Blankets, Part Boxes
Special Tools	
Striker Tool	
Installation Tools	
Phillips Head Screwdriver	#2, screwdriver or tip
Small, Flat Blade Screwdriver	
10 mm Socket	
12 mm Socket	
Pneumatic/Electric Wrench	
10 mm Wrench	
Torque Wrench	
Nylon Panel Removal Tool	
Side Cutters	
Clip Removal Tool	
Special Chemicals	
3M Prep Solvent-70	

Color Applicability/Trim Level

Accessory Color																				
	Vehicle/Trim Color																			

General Applicability






2001 - Highlander with factory keyless entry, only.

Recommended Sequence of Application

Item #	Accessory	
1		

*Mandatory

Legend

	STOP: Damage to the vehicle may occur. Do not proceed until process has been complied with.
	OPERATOR SAFETY: Use caution to avoid risk of injury.
	CRITICAL PROCESS: Proceed with caution to ensure a quality installation. These points will be audited on a completed vehicle installation.
	GENERAL PROCESS: This highlights specific processes to ensure a quality installation. These points will be audited during the accessory installation.
	TOOLS & EQUIPMENT: This calls out the specific tools and equipment required for this process.

A. Vehicle Disassembly

1. Remove the negative battery cable. (Fig. A1)



- i. Protect the fender before starting.
- ii. Be careful not to touch the positive terminal.

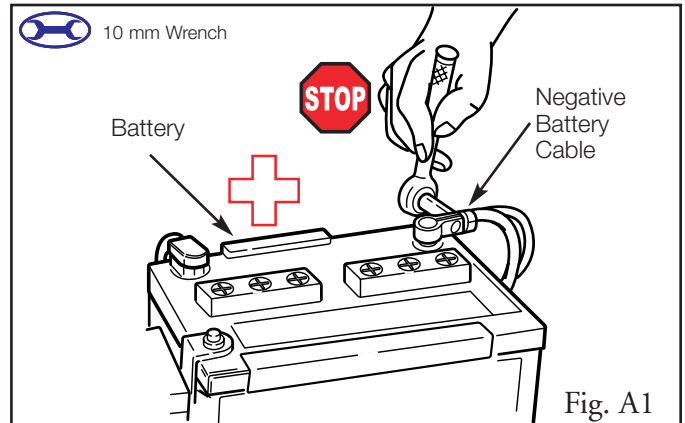


Fig. A1

2. Remove the passenger's step cover. (Fig. A2)



- i. Cover the floor and seats before starting.
- ii. Do not scratch the cover.

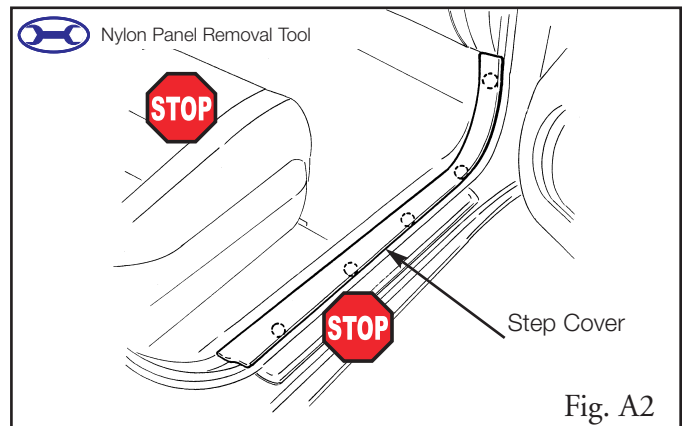


Fig. A2

3. Remove the passenger's cowl cover. (Fig. A3)



- i. Remove the nut securing the cowl cover.
- ii. Do not scratch the cover.

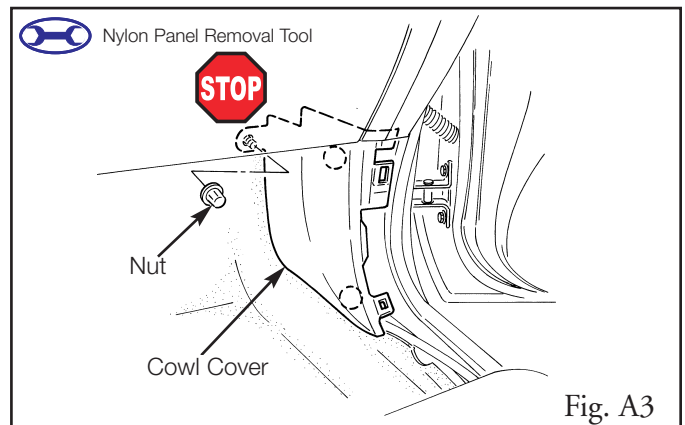


Fig. A3

4. Remove the air damper wire terminal from the bottom of the glove box. (Fig. A4)

- i. Remove the clip securing the air damper wire terminal.

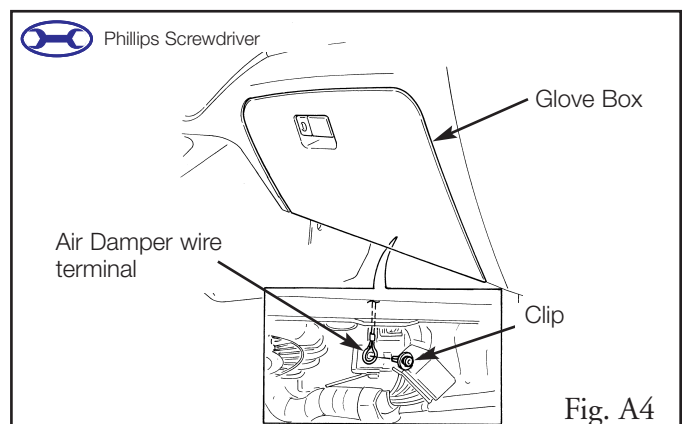


Fig. A4

Section II - Installation Procedure

5. Remove the glove box. (Fig. A5)

i. Remove the two hinge pins securing the bottom of the glove box.



ii. Do not scratch the glove box.

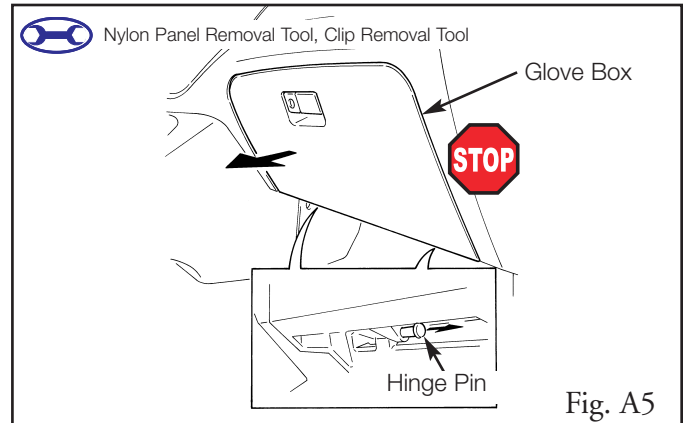


Fig. A5

6. Remove the glove box inner cover. (Fig. A6)

i. Remove the seven screws securing the cover.



ii. Disconnect the connector.



iii. Do not scratch the dash panel.

iv. Do not pull on the wires; pull on the connector.

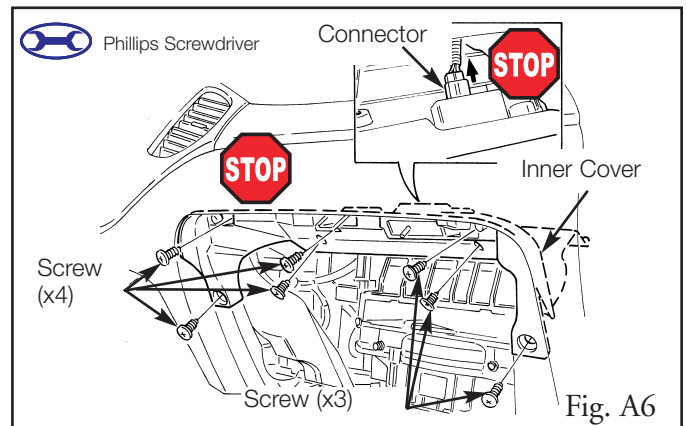


Fig. A6

7. Remove the passenger side panel. (Fig. A7)

i. Remove the two clips securing the cover.



ii. Do not scratch the cover.

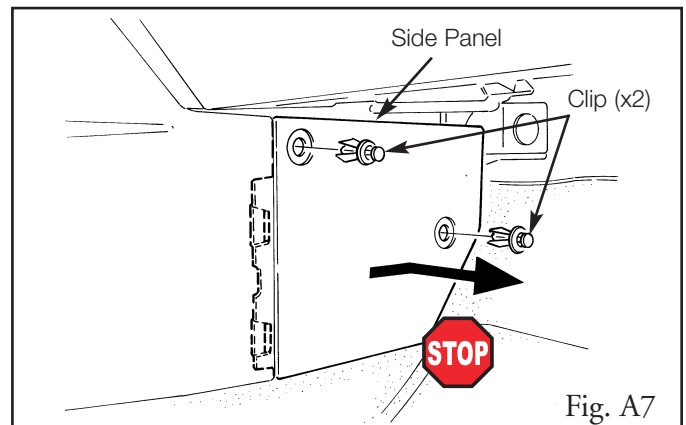


Fig. A7

8. Remove the driver's step cover. (Fig. A8)



i. Cover the floor and seats before starting.



ii. Do not scratch the cover.

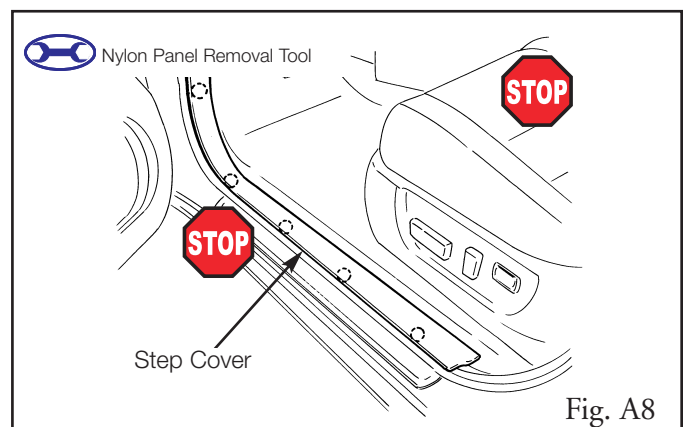


Fig. A8

9. Remove the driver's cowl cover.
(Fig. A9)

i. Remove the nut securing the cowl cover.



ii. Do not scratch the cover.

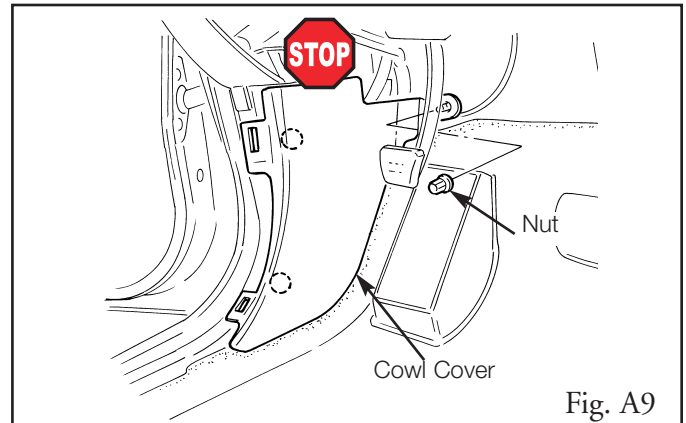


Fig. A9

10. Remove the driver side panel.
(Fig. A10)

i. Remove the two clips securing the cover.



ii. Do not scratch the cover.

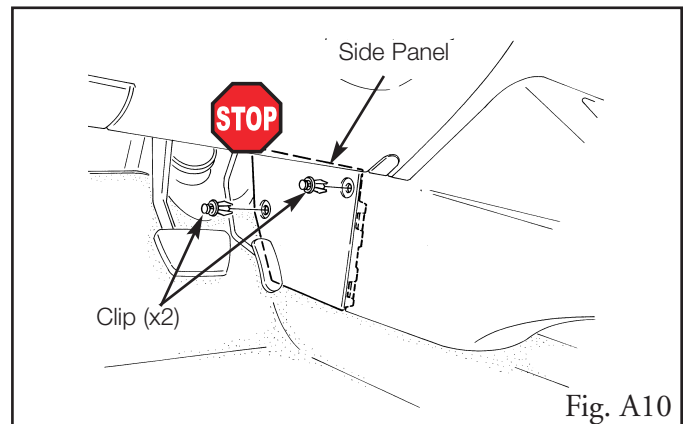


Fig. A10

11. Open the screw cover from the lower dash cover. (Fig. A11)



i. Do not scratch the cover.

12. Remove the hood release latch.
(Fig. A11)

i. Remove the cable from the latch as shown.



ii. Do not scratch the cover.

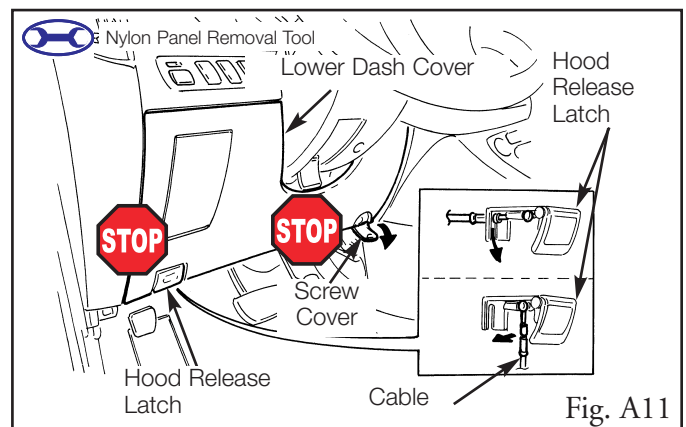


Fig. A11

13. Remove the lower dash cover.
(Fig. A12)

i. Remove the one bolt and one screw securing the lower dash cover.



ii. Do not scratch the cover.

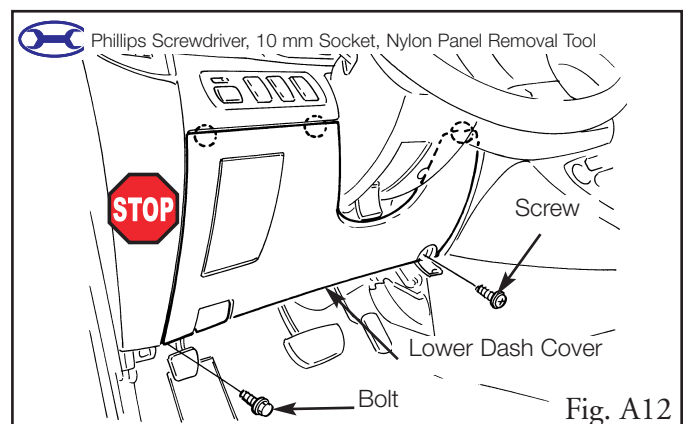
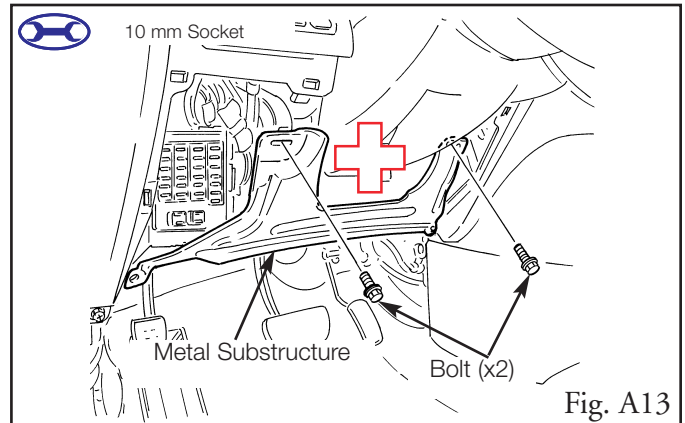


Fig. A12

14. Remove the metal substructure.
(Fig. A13)



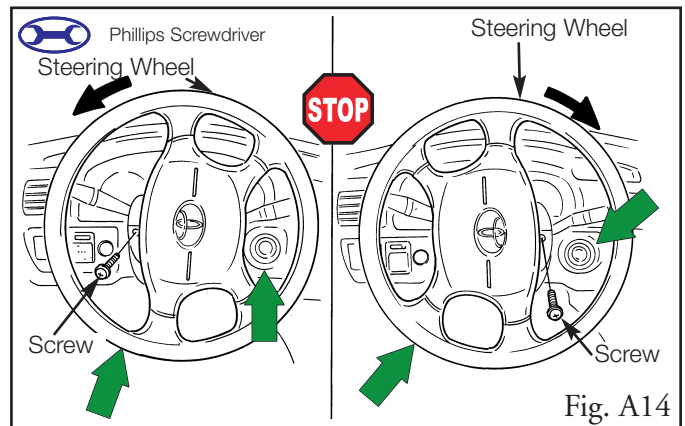
- i. Remove the two bolts securing the metal substructure.
- ii. Be careful not to get cut by the sharp metal edges.



15. Remove the two screws, located behind the steering wheel, securing the bottom steering column cover. (Fig. A14)



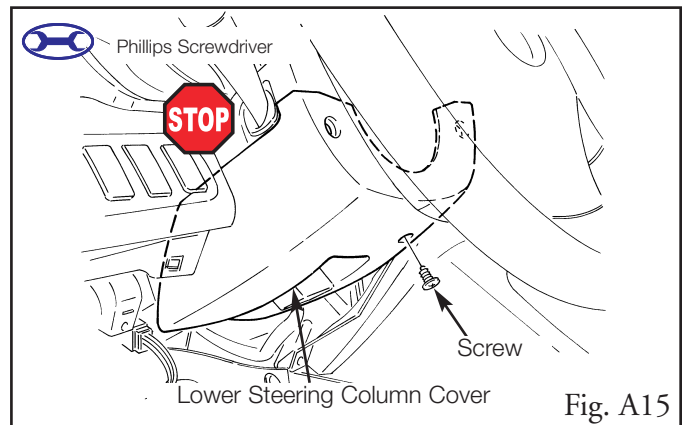
- i. Do not scratch the cover.
- ii. Insert the key into the ignition switch and turn it to ON, then turn the steering wheel left or right to gain access to the screws.



16. Remove the lower steering column cover. (Fig. A15)



- i. Remove the screw securing the cover.
- ii. Do not scratch the cover.



17. Remove the cover from the back door trim as shown. (Fig. A16)

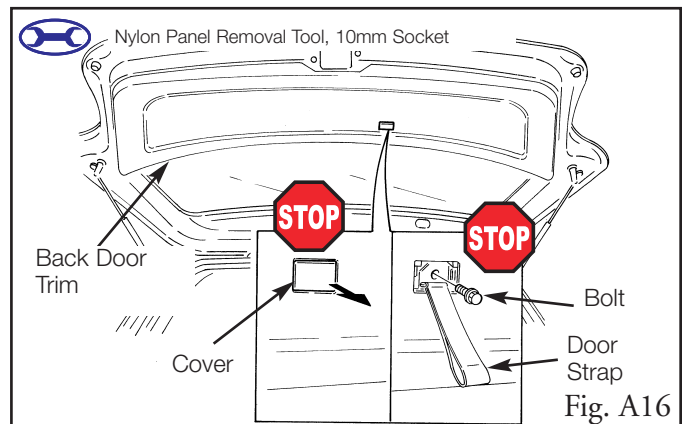


- i. Do not scratch the cover.

18. Remove the bolt from the back door trim. (Fig. A16)



- i. Do not scratch the cover.



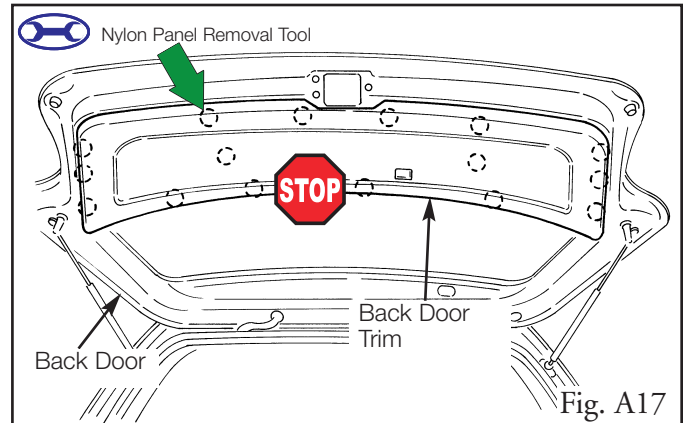
19. Remove the back door trim. (Fig. A17)



i. Insert the nylon panel removal tool between the back door and back door trim to pry out.

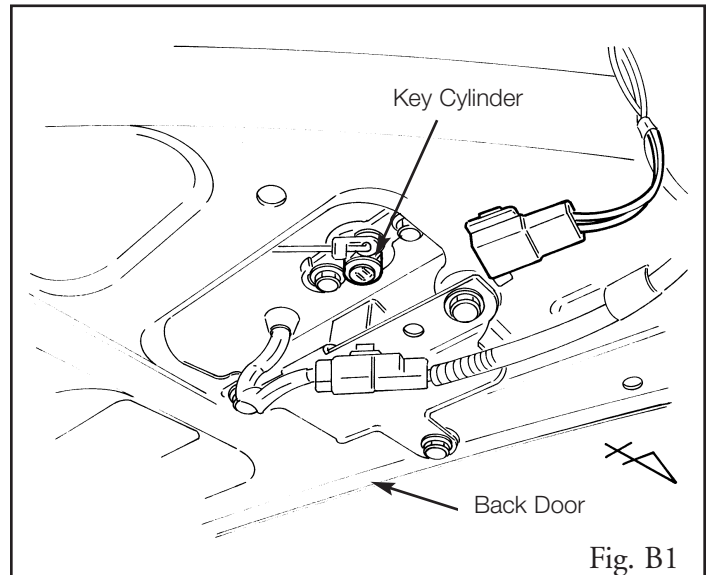


ii. Do not scratch the cover.



B. Key Cylinder Switch Installation

1. Locate the key cylinder on the back door. (Fig. B1)



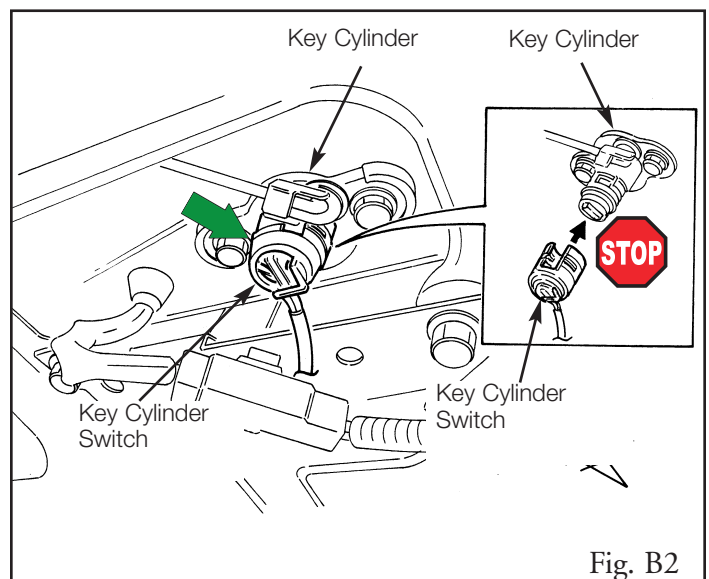
2. Slide the key cylinder switch onto the back door's key cylinder. (Fig. B2)



i. Do not force the switch onto the back door's key cylinder; it only fits one way.



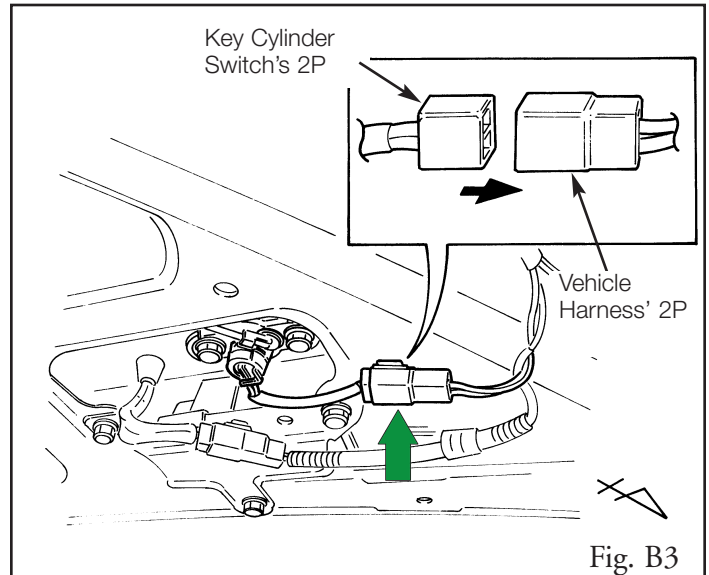
ii. Insert the key into the key cylinder and turn it to verify the switch is engaged.



3. Plug the key cylinder switch's 2P connector into the vehicle harness' 2P connector. (Fig. B3)



- i. Verify the connector's are plugged in securely.

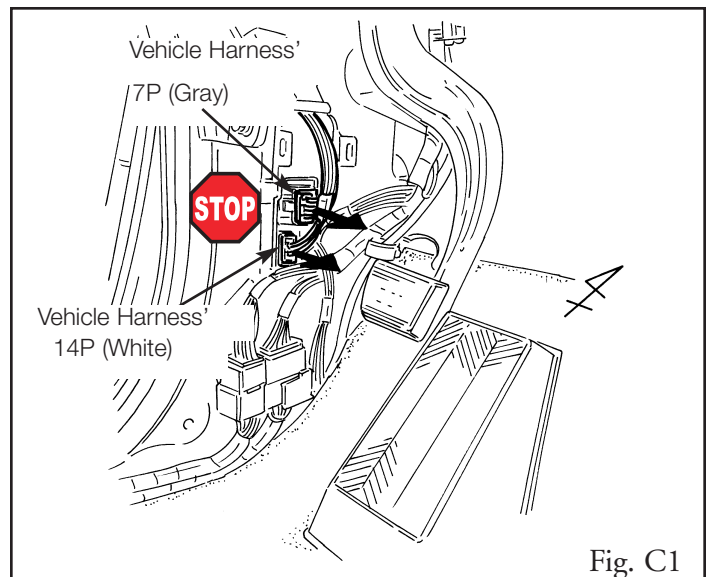


C. V5 Harness Installation

1. Locate and disconnect the gray 7P connector and white 14P connector from the driver side cowl area. (Fig. C1)



- i. Do not pull on the wires; pull on the connector.



2. Plug in the V5 harness' gray 7P connectors between the vehicle harness' gray 7P connector and the driver side connector block. (Fig. C2)

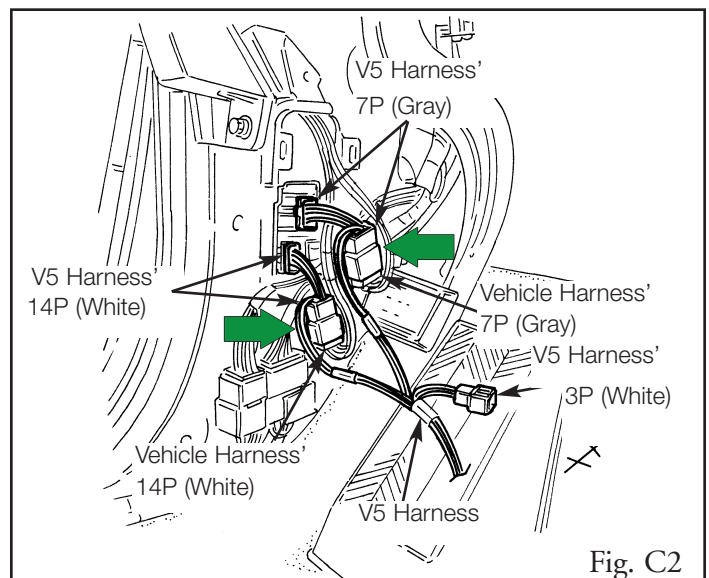


- i. Verify the connectors are plugged in securely.

3. Plug in the V5 harness' white 14P connectors between the vehicle harness' white 14P connector and the driver side connector block. (Fig. C2)



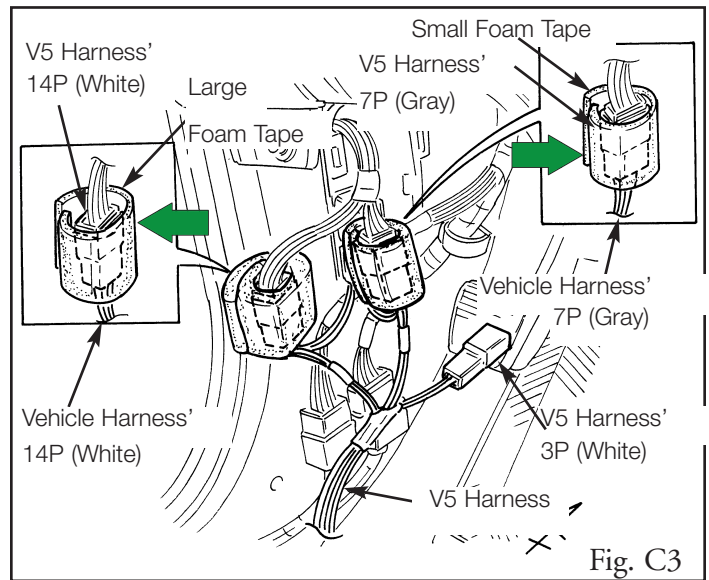
- i. Verify the connectors are plugged in securely.



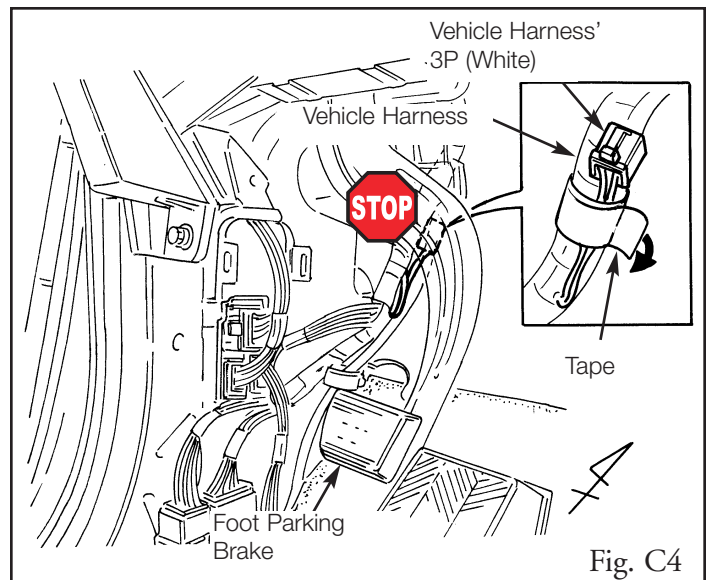
Section II - Installation Procedure

➔ 4. Wrap the white 14P connectors with a large strip of foam tape. (Fig. C3)

➔ 5. Wrap the gray 7P connectors with a small strip of foam tape. (Fig. C3)

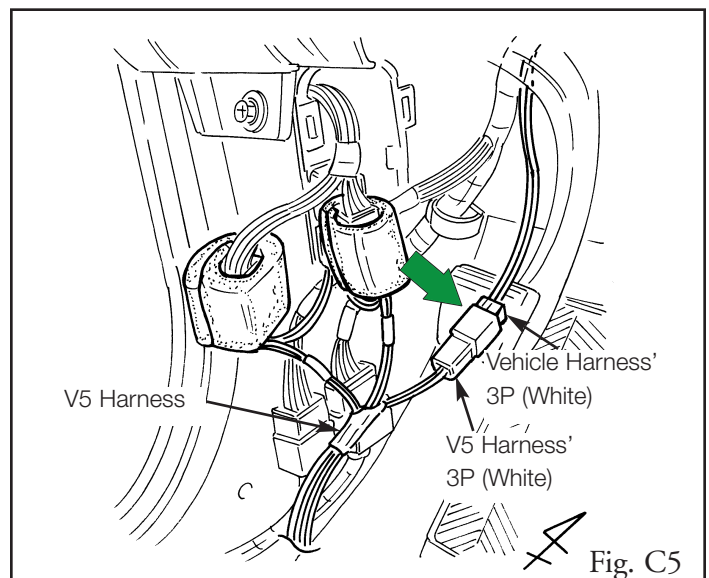


6. Locate and remove the tape securing the vehicle harness' white 3P connector from the driver side cowl area. (Fig. C4)

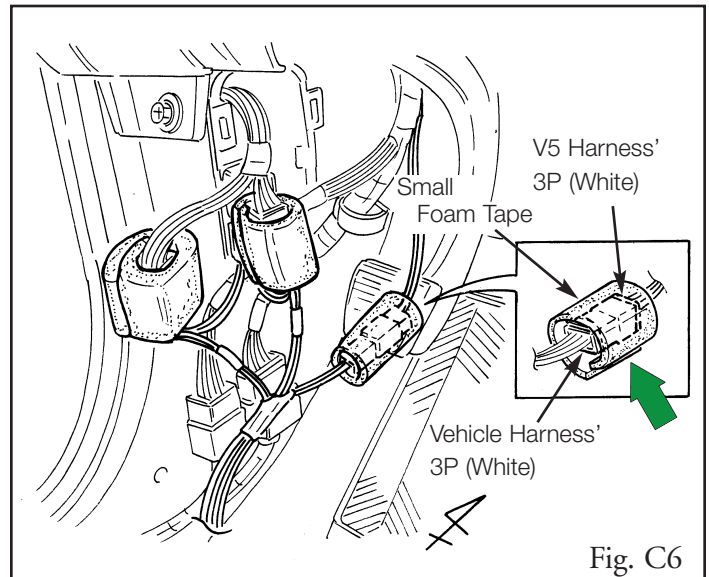


7. Plug in the V5 harness' white 3P connector into the vehicle's white 3P connector. (Fig. C5)

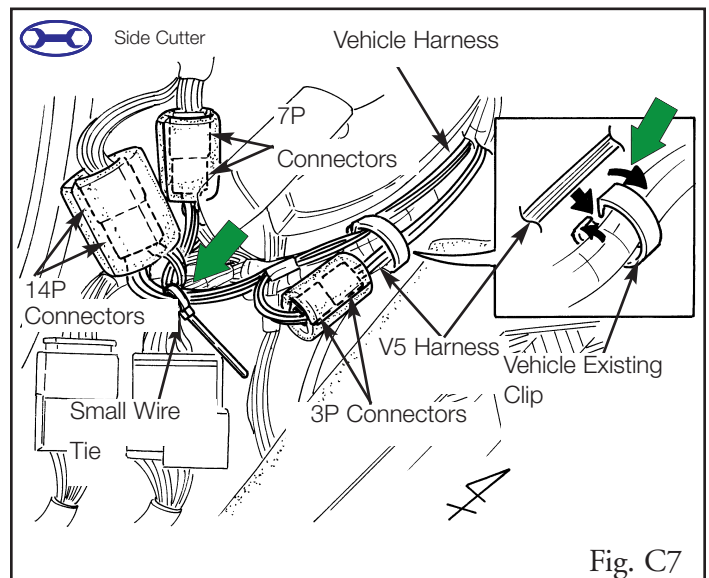
➔ i. Verify the connectors are plugged in securely.



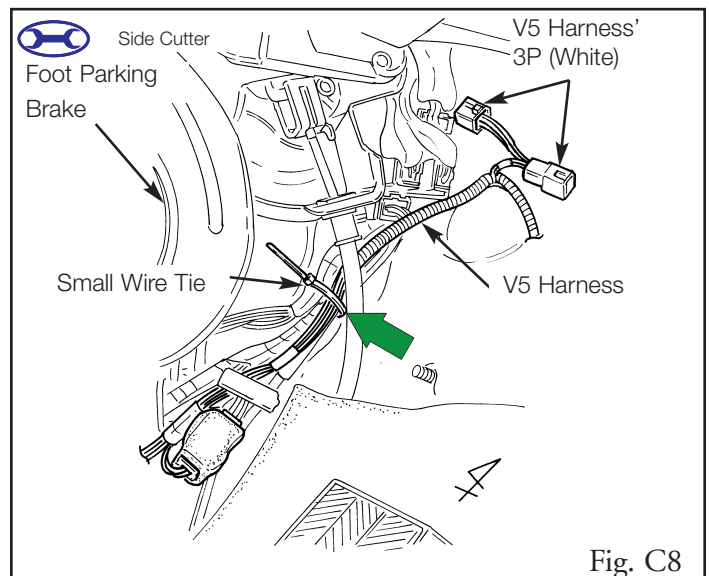
- ➔ 8. Wrap the white 3P connectors with a small strip of foam tape. (Fig. C6)



- ➔ 9. Secure the V5 harness with the vehicle's existing clip. (Fig. C7)
- 10. Secure the V5 harness' 14P connector and 7P connector to the vehicle's harness with one small wire tie. (Fig. C7)
- ➔ i. Clip the wire tie.



- 11. Route the V5 harness up toward the Instrument Panel J/B, then secure it to the vehicle's harness with one small wire tie. (Fig. C8)
- ➔ i. Clip the wire tie.



12. Locate and disconnect the white 3P connector from the driver side cowl area. (Fig. C9)



- i. Do not pull on the wires; pull on the connector.

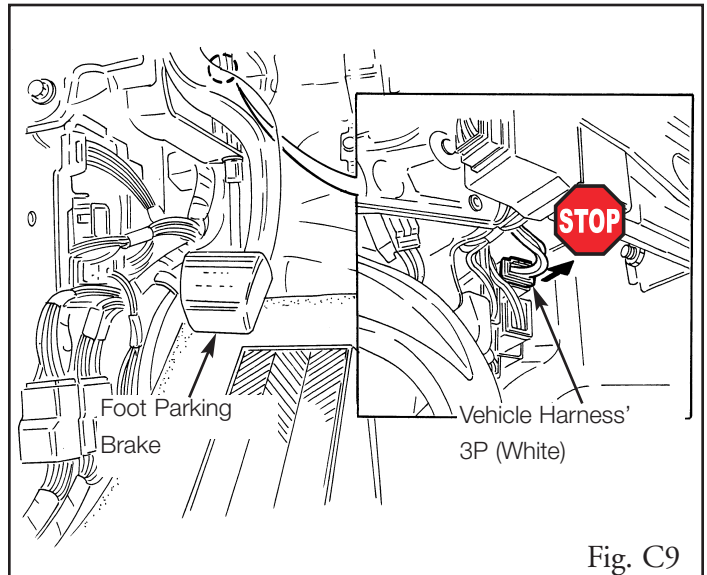


Fig. C9

13. Plug in the V5 harness' white 3P connectors into the vehicle's white 3P connectors. (Fig. C10)



- i. Verify the connectors are plugged in securely.

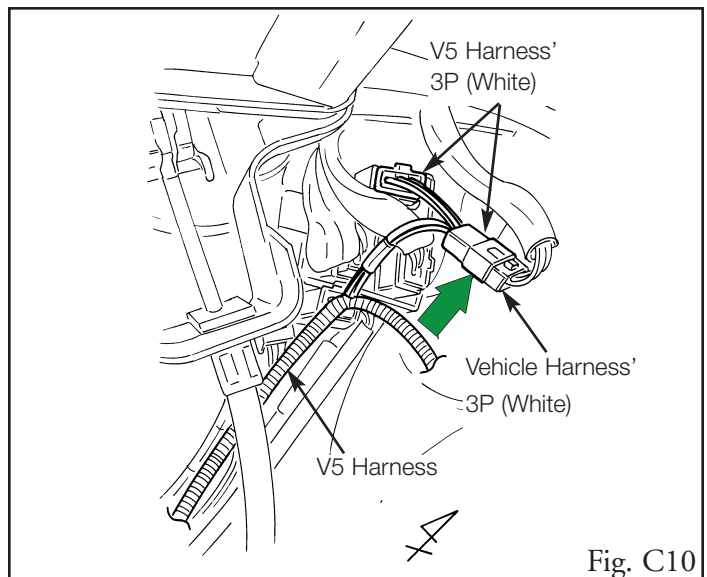


Fig. C10

14. Looking up from the back of the Instrument Panel J/B, route the V5 harness toward the Instrument Panel J/B, then secure it to the vehicle's harness with two small wire ties. (Fig. C11)



- i. Clip the wire ties.

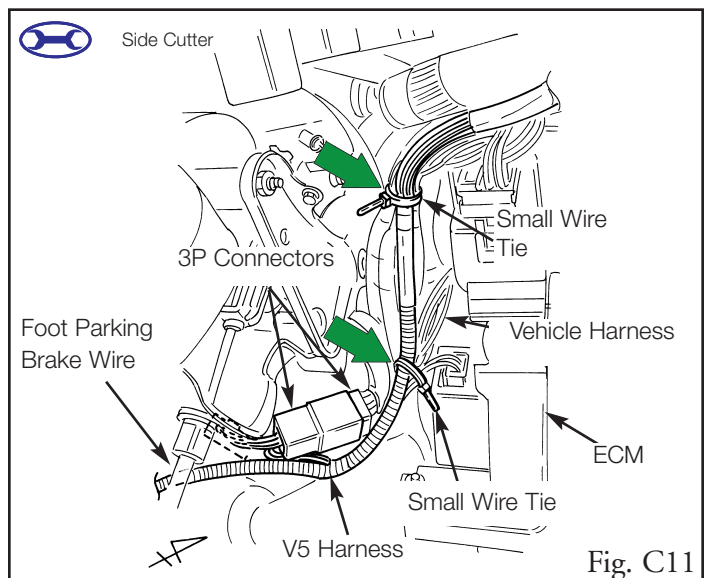


Fig. C11

Section II - Installation Procedure

15. Route the V5 harness toward the steering column area, then secure it to the vehicle's harness with two small wire ties. (Fig. C12)



i. Clip the wire ties.

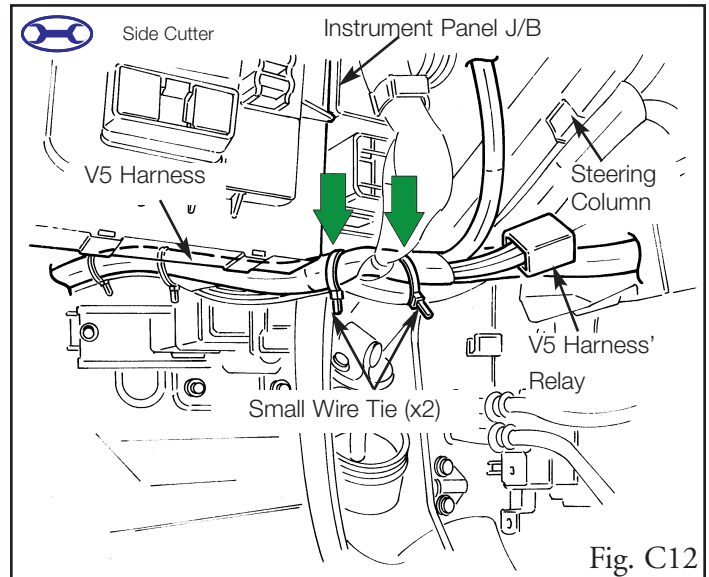


Fig. C12

16. Route the V5 harness up toward the cluster panel area, then secure it to the vehicle's harness with one small wire tie. (Fig. C13)



i. Clip the wire tie.

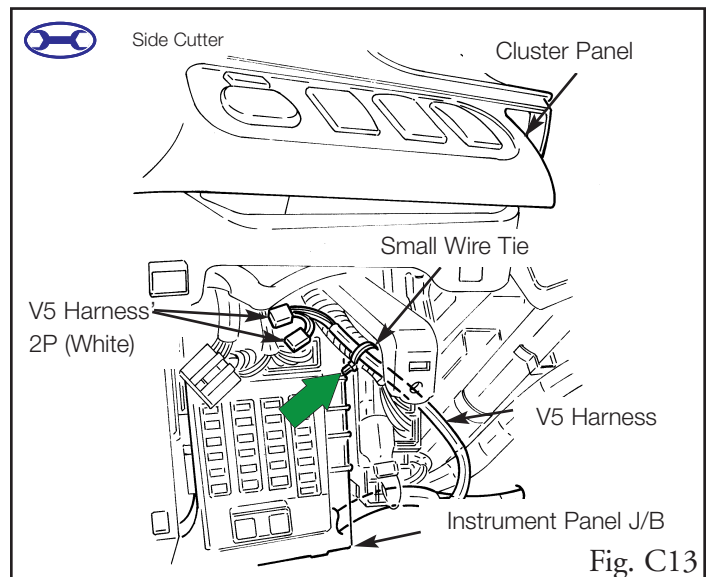


Fig. C13



17. Wrap the V5 harness' relay to the vehicle harness with a large strip of foam tape. (Fig. C14)

18. Secure the V5 harness to the vehicle harness with two small wire ties. (Fig. C14)



i. Clip the wire ties.

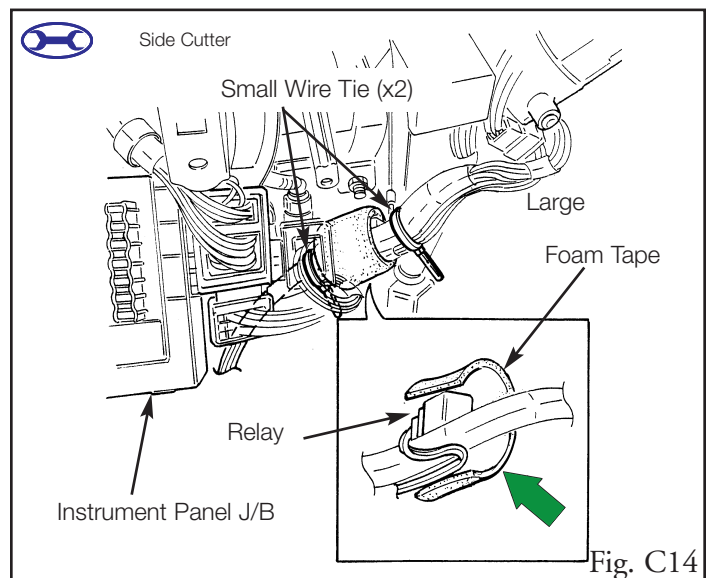
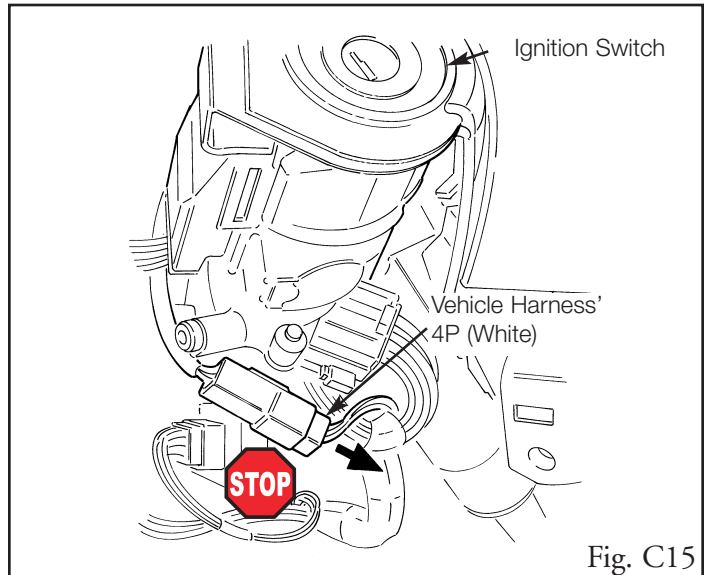


Fig. C14

19. Locate and disconnect the white 4P connector from the ignition switch. (Fig. C15)



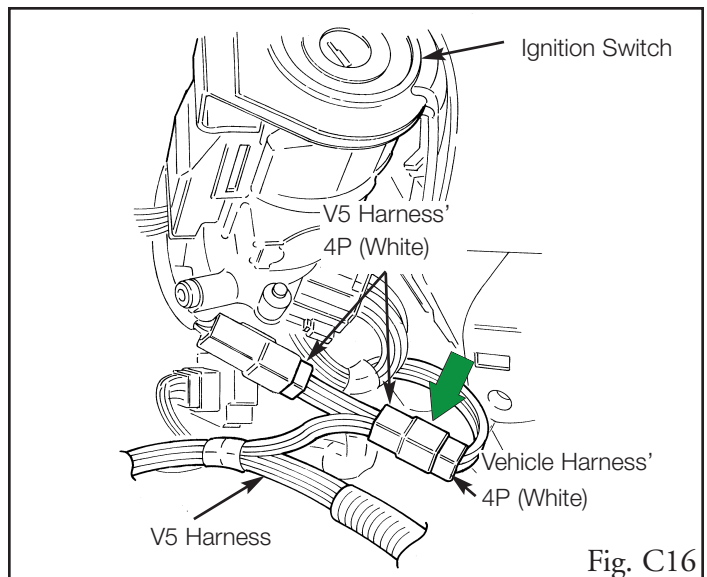
- i. Do not pull on the wires; pull on the connector.



20. Plug in the V5 harness' white 4P connectors between the vehicle harness' white 4P connector and the ignition switch. (Fig. C16)



- i. Verify the connectors are plugged in securely.



21. Secure the V5 harness to the vehicles harness with one small wire tie. (Fig. C17)

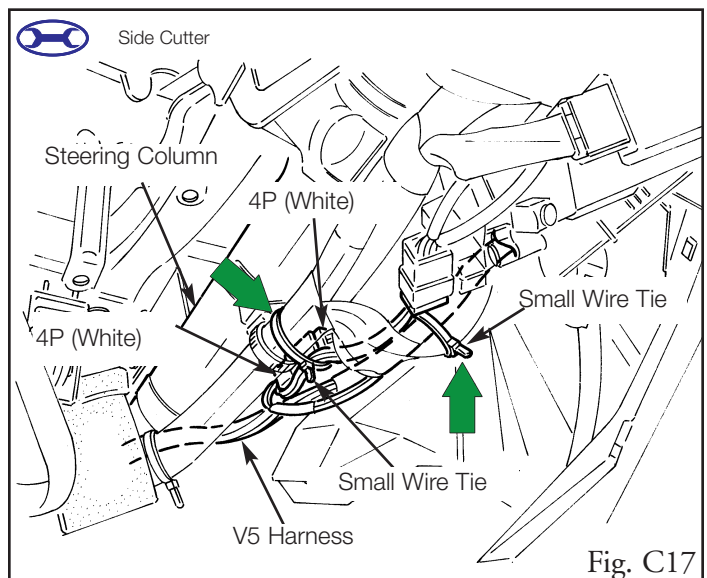


- i. Clip the wire tie.

22. Secure the white 4P connectors to the vehicle's harness with one small wire tie. (Fig. C17)



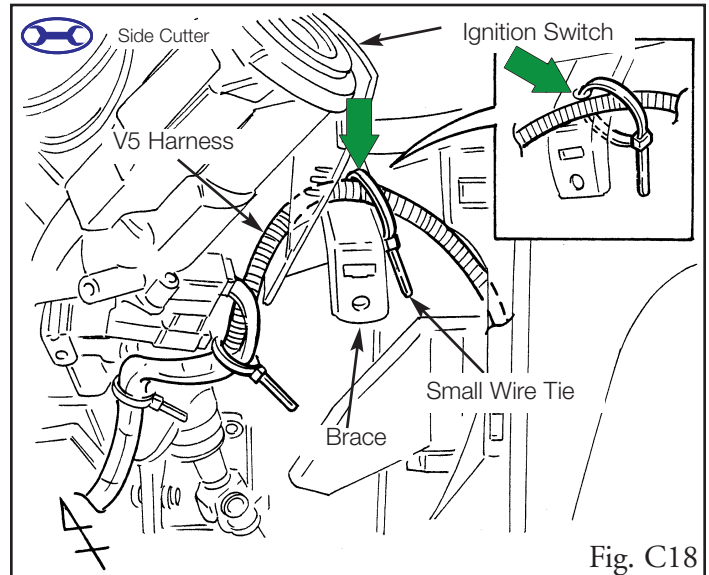
- i. Clip the wire tie.



Section II - Installation Procedure

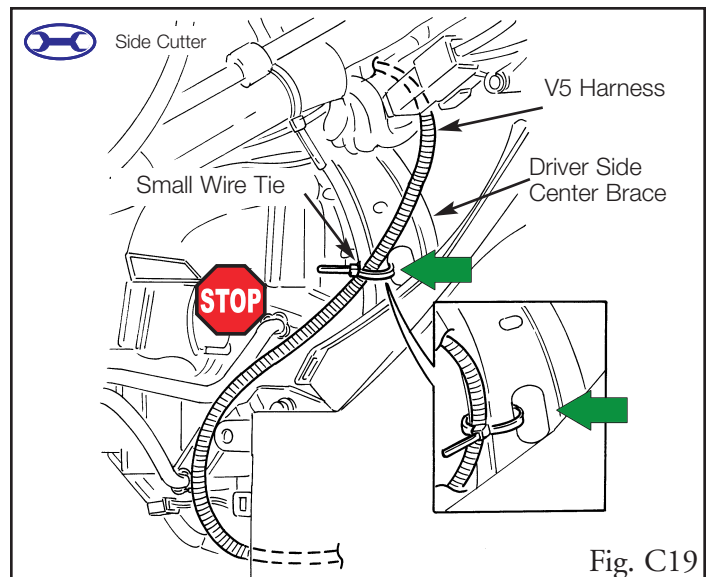
23. Route the V5 harness toward the center console area, then secure it to the brace shown with one small wire tie. (Fig. C18)

- ➔ i. Insert a small wire tie through the hole in the brace, then secure the V5 harness with the small wire tie.
- ➔ ii. Clip the wire tie.



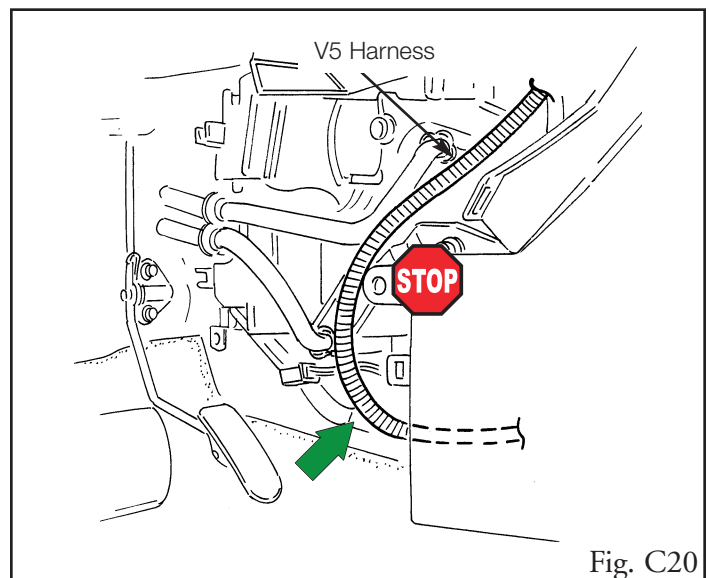
24. Route the V5 harness toward the center console area, then secure it to the driver side center brace with one small wire tie. (Fig. C19)

- ➔ i. Insert a small wire tie through the hole in the driver side center brace, then secure the V5 harness with the small wire tie.
- ➔ ii. Clip the wire tie.
- STOP iii. Route the V5 harness away from any moving parts such as levers, etc.



➔ 25. Route the V5 harness behind the center console, through the opening between the heater unit and floor. (Fig. C20)

- STOP i. Route the V5 harness away from any moving parts such as levers, etc.



26. Route V5 harness from behind the center console on the passenger side, then secure it to the vehicle harness with one small wire tie. (Fig. C21)



i. Clip the wire tie.



ii. Route the V5 harness away from any moving parts such as levers, etc.

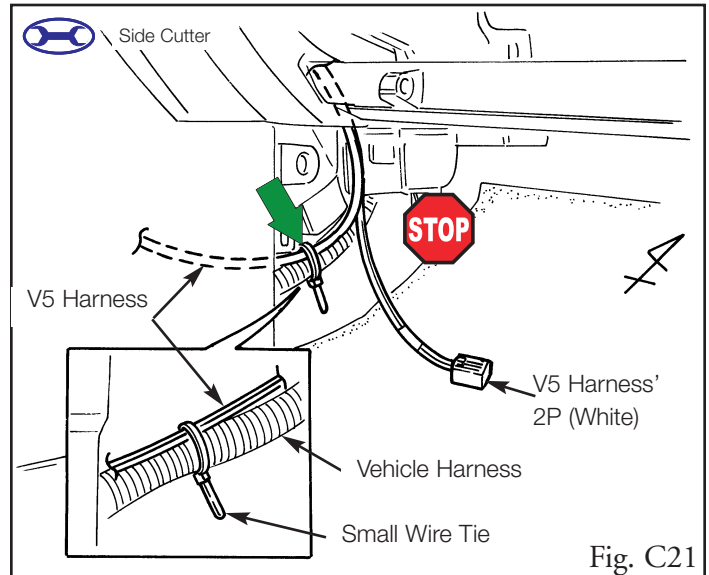


Fig. C21



27. Route the V5 harness up toward the instrument panel, then secure it to the passenger side heater unit with two small strips of foam tapes. (Fig. C22)



i. Route the V5 harness away from any moving parts such as levers, etc.

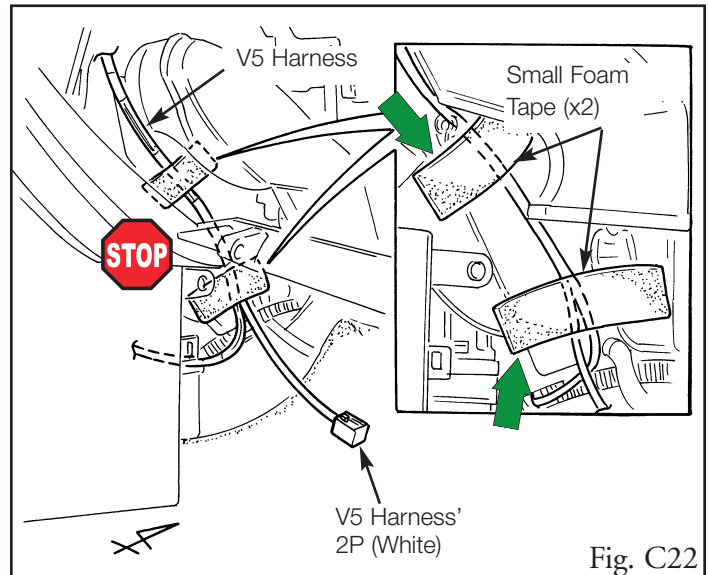


Fig. C22

28. Route the V5 harness up toward the instrument panel. (Fig. C23)



i. Route the V5 harness' dark gray 26P connector around the back of the metal reinforcement.



ii. Route the V5 harness away from any moving parts such as levers, etc.

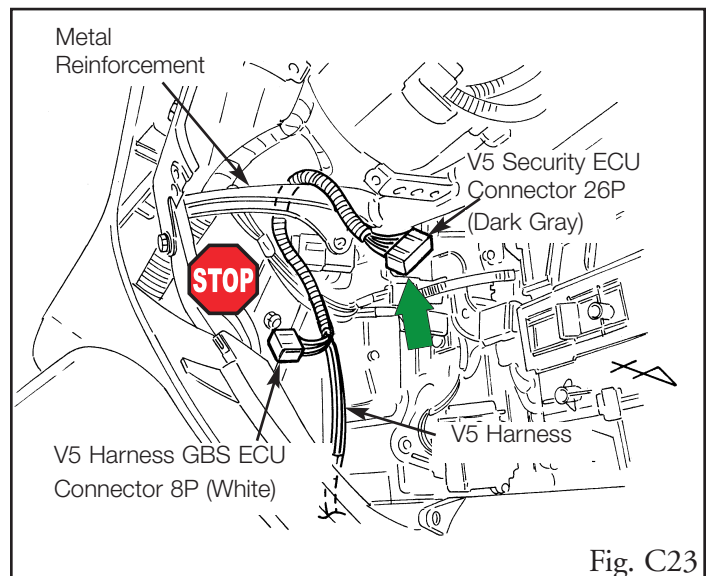


Fig. C23

D. V5 ECUs Preparation and Installation

1. Turn the GBS adjustment screw on the GBS ECU to the "9" position. (Fig. D1)

- ➔ i. Adjust as necessary during the function verifications.

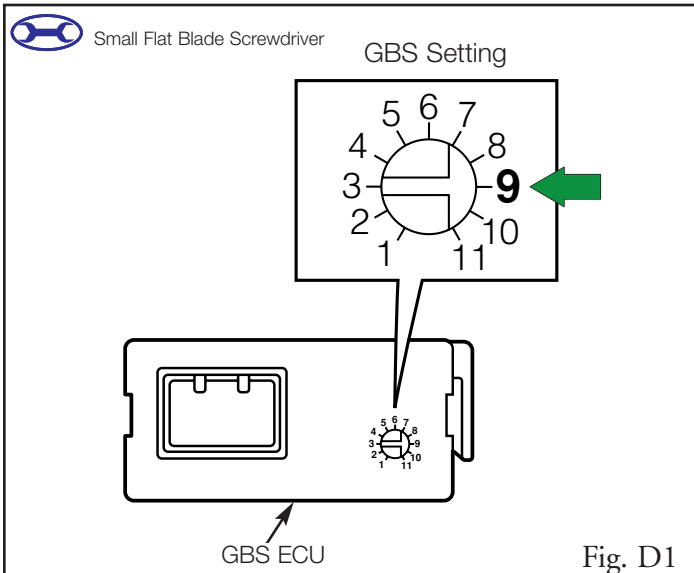


Fig. D1

2. Insert the GBS ECU mounting bracket into the indicated bracket slot on the GBS ECU. (Fig. D2)

- STOP i. Insert the mounting bracket into the correct slot; you have only one chance to install it properly.

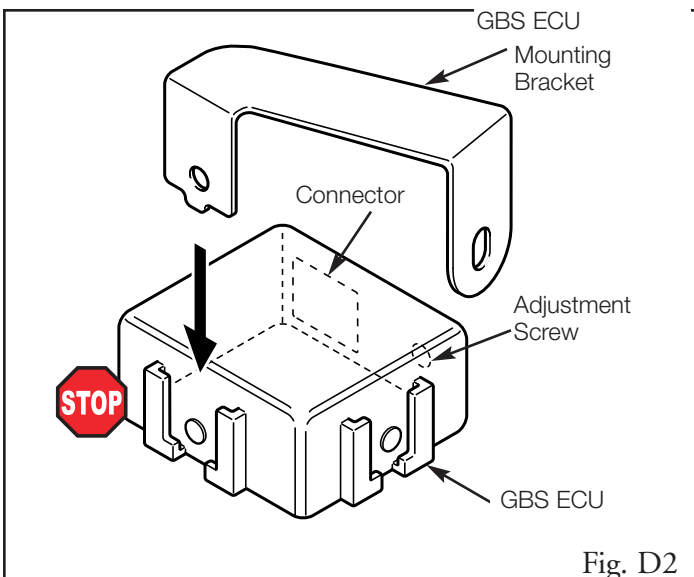


Fig. D2

3. Plug in the V5 harness' white 8P connector to the GBS ECU. (Fig. D3)

- ➔ i. Verify the connectors are plugged in securely.

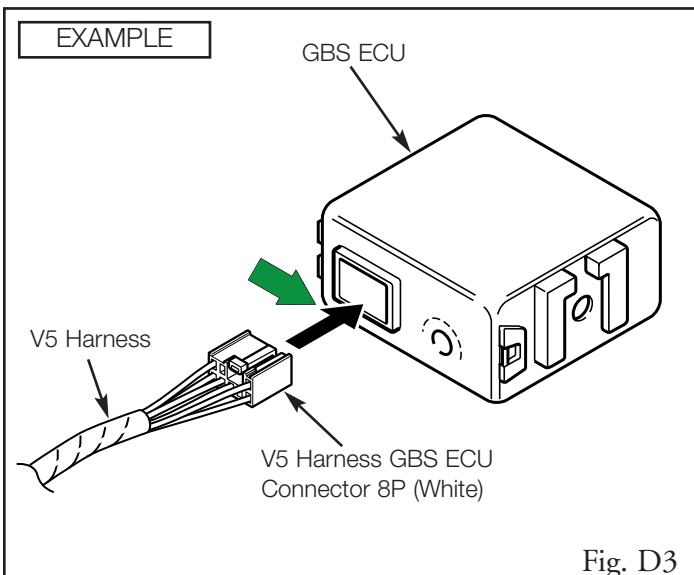


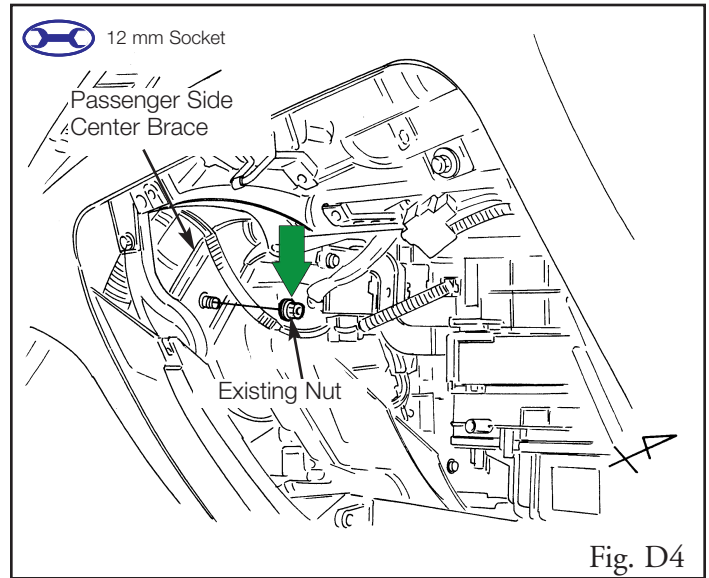
Fig. D3

Section II - Installation Procedure

4. Locate and remove the vehicle's existing nut from the passenger side center brace. (Fig. D4)



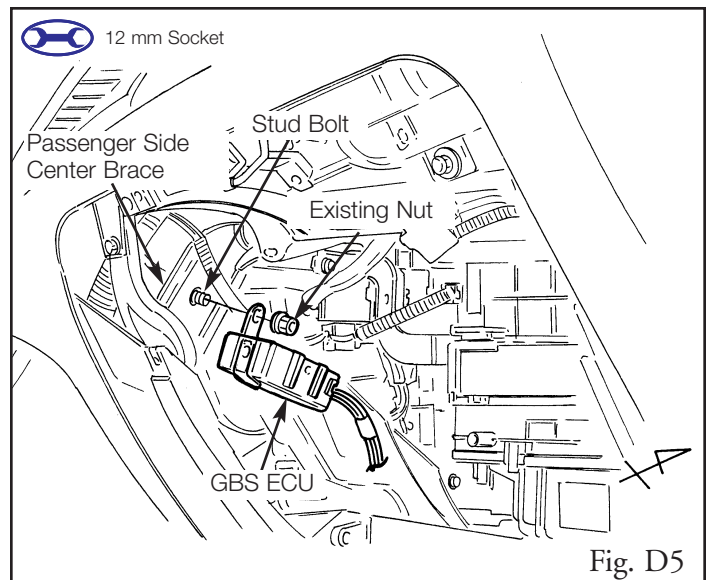
- i. Do not discard the nut.



5. Using the stud bolt and existing nut, secure the GBS ECU to the passenger side center brace in the center console area. (Fig. D5)



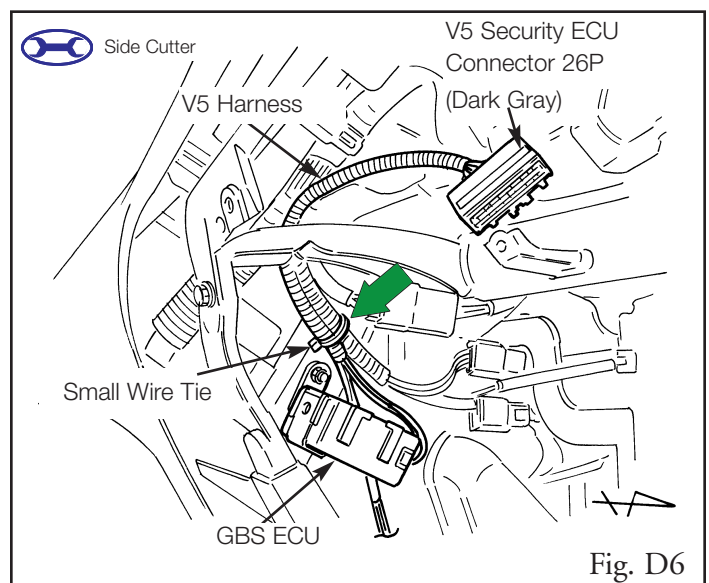
- i. Secure the GBS ECU as shown.



6. Secure the V5 harness to the vehicle's harness with one small wire tie. (Fig. D6)



- i. Clip the wire tie.



7. Insert the V5 security ECU mounting bracket into the indicated bracket slot on the V5 security ECU. (Fig. D7)



- i. Insert the mounting bracket into the correct slot; you have only one chance to install it properly.

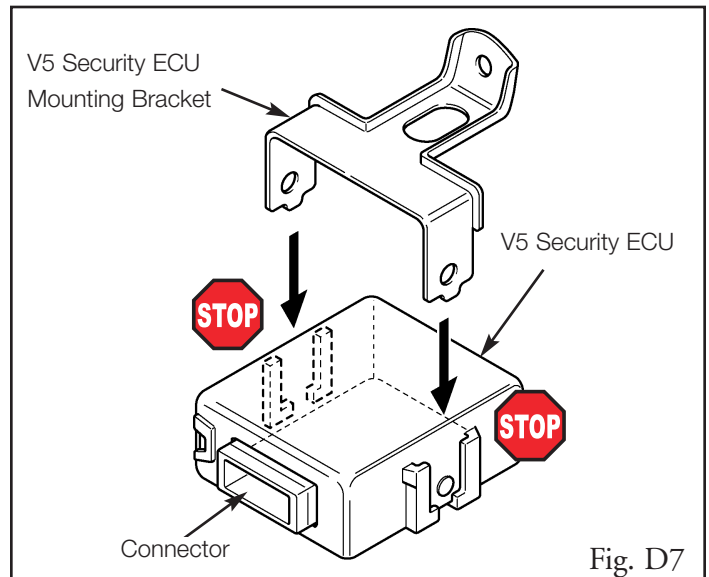


Fig. D7

8. Plug in the V5 harness' dark gray 26P connector to the V5 security ECU. (Fig. D8)



- i. Verify the connectors are plugged in securely.

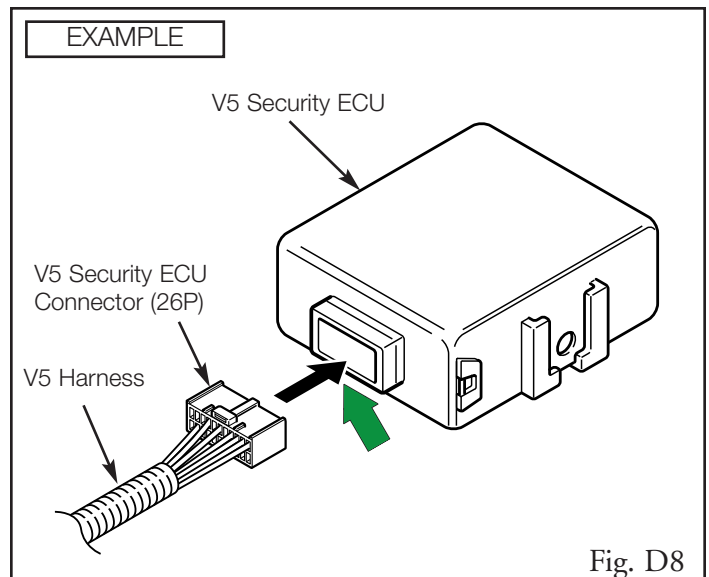


Fig. D8

9. Looking up from the glove box opening, locate the weld nut near the edge of the instrument panel. (Fig. D9)

- i. Weld nut is located to the left of latch.

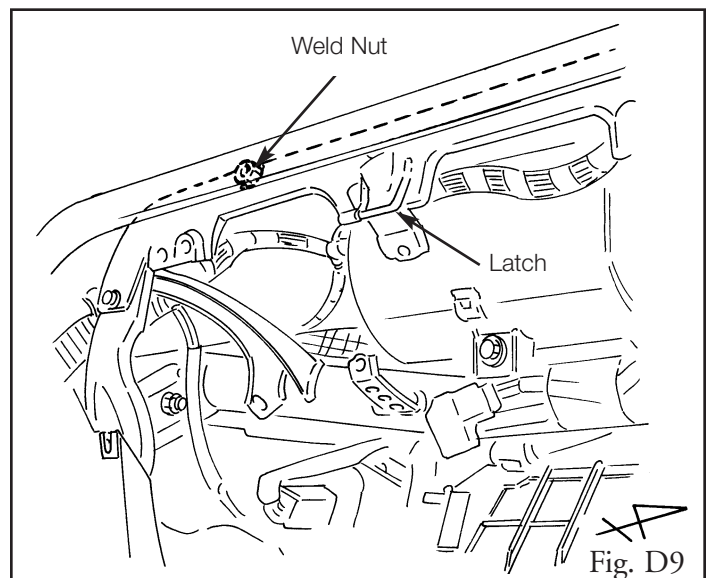


Fig. D9

Section II - Installation Procedure

10. Using the supplied bolt, secure the V5 Security ECU to the metal reinforcement. (Fig. D10)



i. Secure the V5 Security ECU as shown.

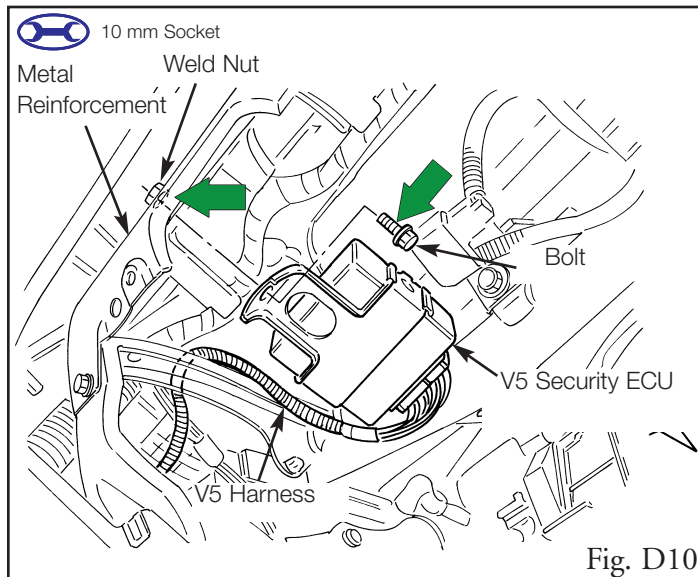


Fig. D10

11. Secure the V5 harness to the vehicle's harness with one small wire tie. (Fig. D11)



i. Clip the wire tie.

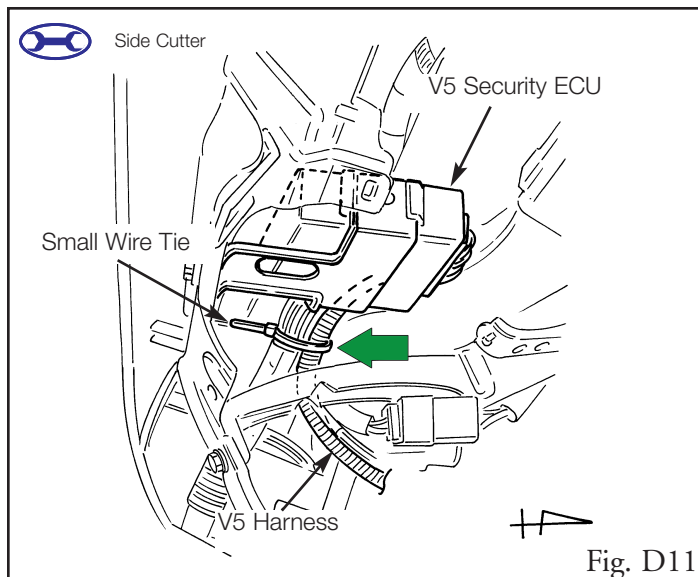


Fig. D11

E. Microphone Installation

1. Locate the V5 harness' white 2P connector from the passenger side center console area. (Fig. E1)

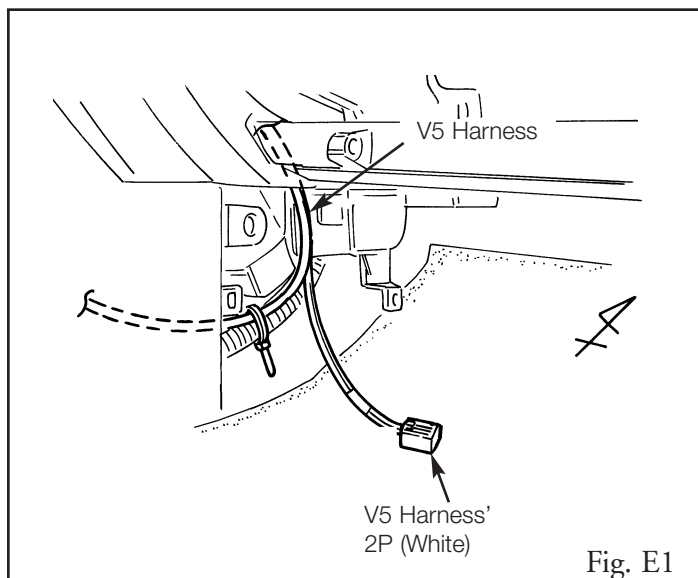


Fig. E1

Section II - Installation Procedure

STOP 2. Using 3M Prep Solvent -70, clean the area indicated on the back side of passenger side panel. (Fig. E2)

STOP i. Do not scratch the panel.

3. Remove the backing sheet, and secure the microphone to the back side of the passenger side panel. (Fig. E2)

→ i. Secure the microphone as shown.

STOP ii. Do not touch the adhesive surface of the microphone.

STOP iii. Press the microphone to the passenger side panel firmly.

→ 4. Secure the microphone with a small strip of foam tape. (Fig. E3)

STOP i. Do not cover the opening of the microphone with the foam tape.

5. Plug in the V5 harness' white 2P connector to the microphone white 2P connector. (Fig. E4)

→ i. Verify the connectors are plugged in securely.

→ 6. Secure the 2P connectors to the passenger side panel with a small strip of foam tape. (Fig. E4)

STOP 7. Reinstall the passenger side panel. Ensure that the V5 harness does not interfere with moving parts.

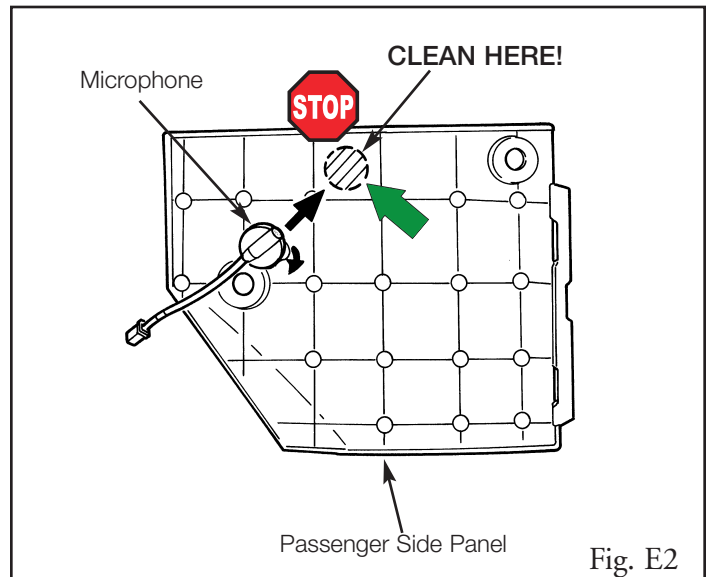


Fig. E2

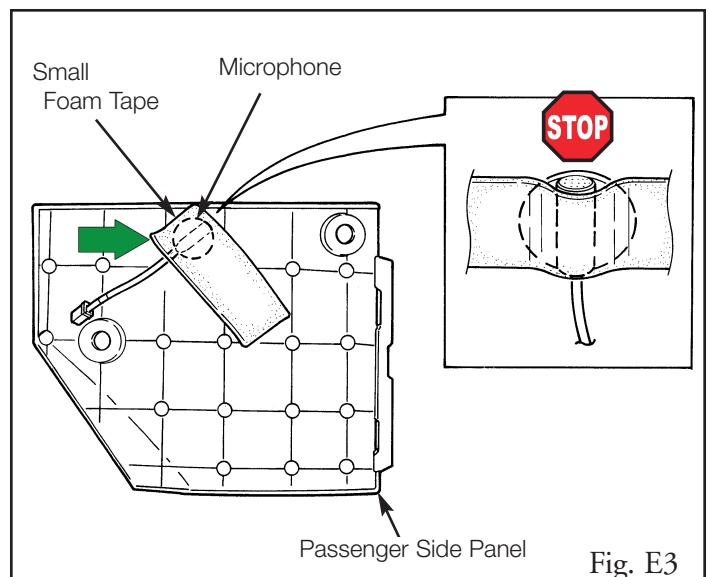


Fig. E3

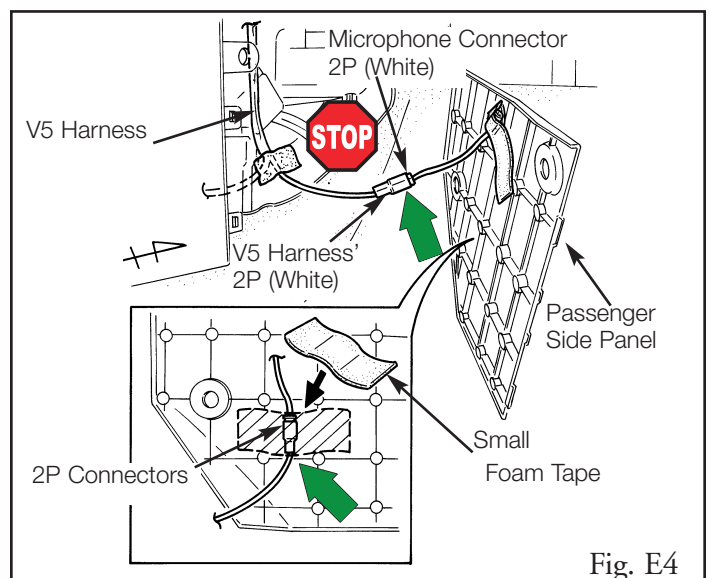


Fig. E4

F. Status Monitor Installation

FOR VEHICLES WITHOUT
IMMOBILISER SYSTEM ONLY.

(Step 1-4)

1. Remove the knockout cover from the far left space of the cluster panel. Vehicles with immobilizer system have security LED in this space. (Fig. F1)



i. Do not perform this step if the vehicle has an immobiliser system.



ii. Do not scratch the panel.

2. Plug in the V5 harness' white 2P connector to the Status Monitor. (Fig. F2)



i. Do not perform this step if the vehicle has an immobiliser system.

ii. Verify the connectors are plugged in securely.



3. Insert the Status Monitor into the knockout opening of the cluster panel. (Fig. F2)



i. Do not scratch the panel.



ii. Do not use the V5 harness' white 2P connector (male).



4. Wrap the unused V5 Harness' White 2P connector (male) to the vehicle harness with one small strip of foam tape. (Fig. F3)



i. Do not perform this step if the vehicle has an immobiliser system.

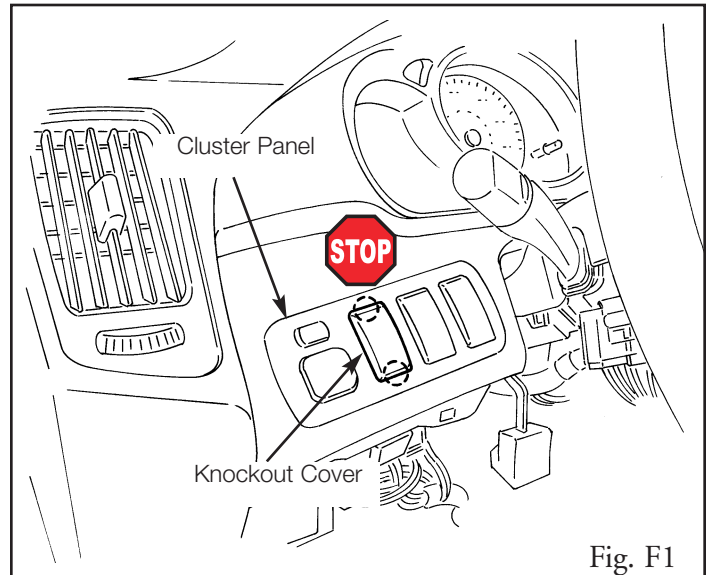


Fig. F1

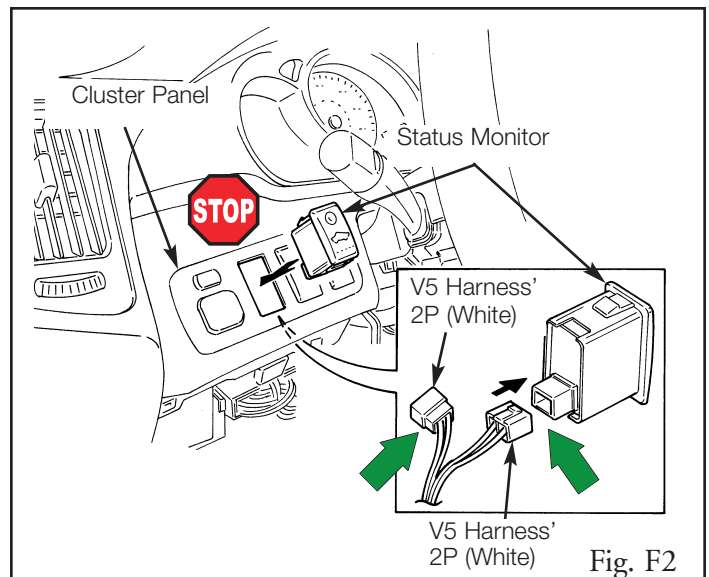


Fig. F2

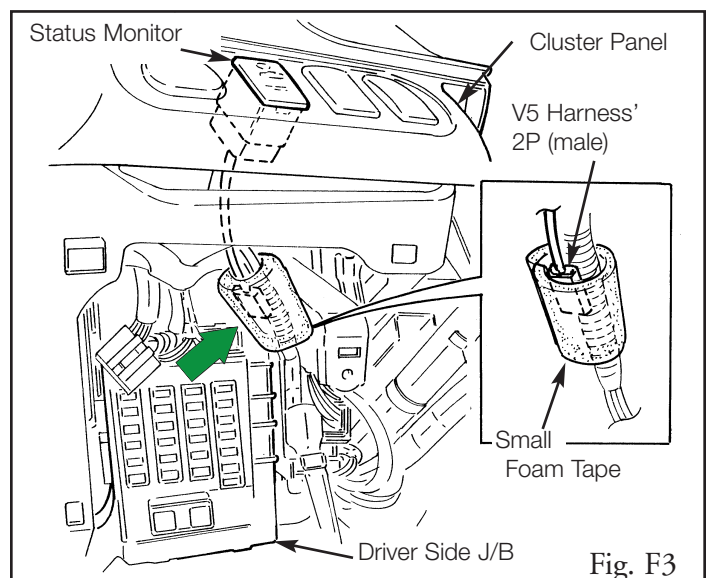








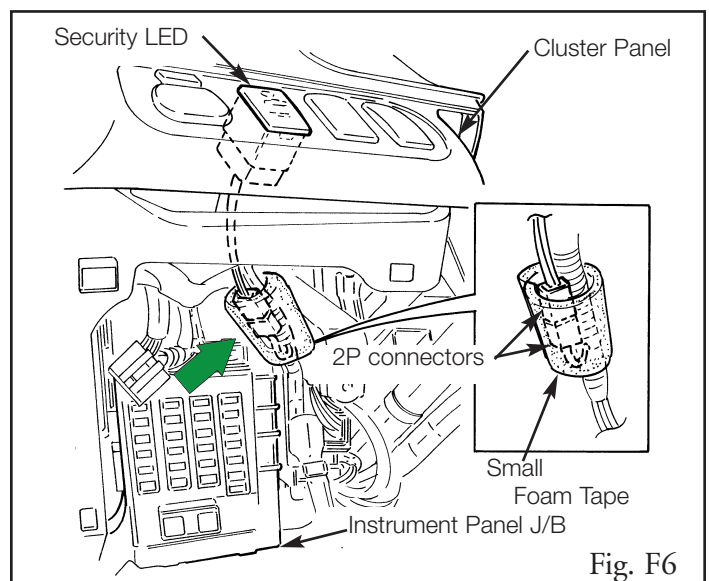
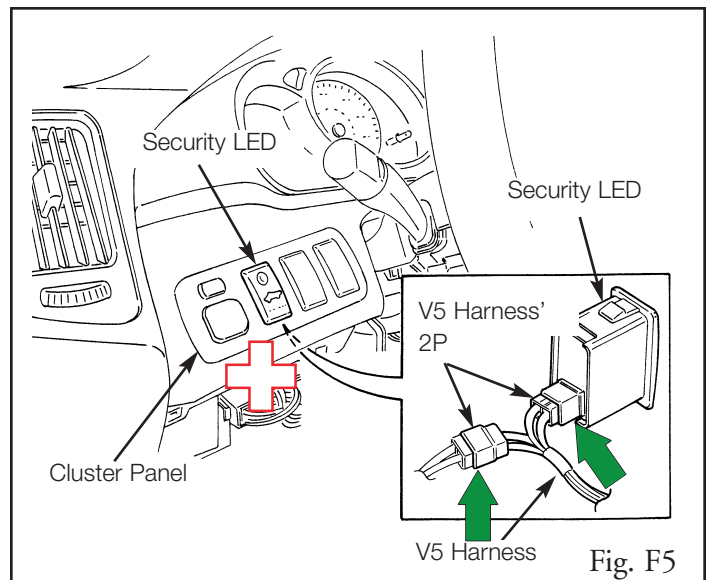
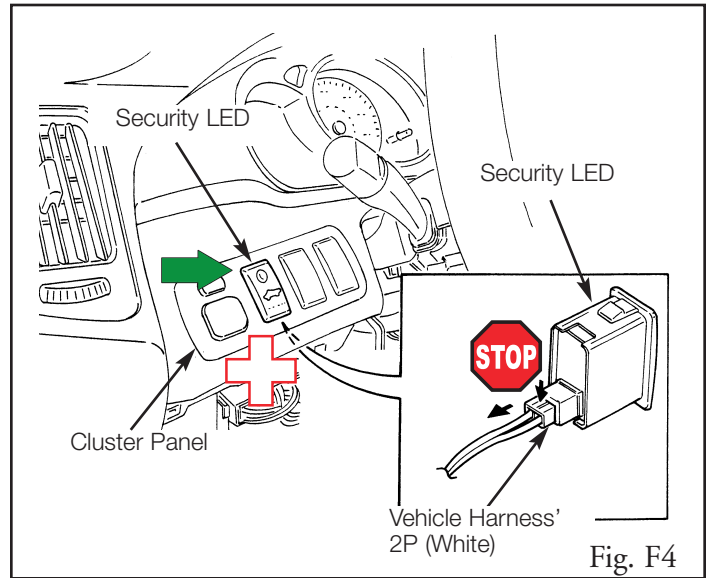


Fig. F3

FOR VEHICLES WITH IMMOBILISER SYSTEM ONLY. (Step 5 - 8)

5. Locate the Security LED in the cluster panel. (Fig. F4)
 -  i. Do not perform this step if the vehicle does not have an immobiliser system.
6. Disconnect the vehicle harness from the Security LED's white 2P connector. (Fig. F4)
 -  i. Do not remove the Security LED.
 -  ii. Be careful not to get cut by the sharp metal edge.
 -  iii. Do not pull on the wires; pull on the connector.
7. Plug in the V5 harness' white 2P connectors between the vehicle harness' white 2P connector and the Security LED. (Fig. F5)
 -  i. Do not perform this step if the vehicle does not have an immobiliser system.
 -  ii. Verify the connectors are plugged in securely.
 -  iii. Be careful not to get cut by the sharp metal edge.
8. Secure the white 2P connectors to the vehicle harness with one small strip of foam tape. (Fig. F6)
 -  i. Do not perform this step if the vehicle does not have an immobiliser system.



G. Warning Label Installation

- ➔ 1. Clean the inside surface of the front door's windows. (Fig. G1)
- ➔ 2. Place the warning label on the inside surface of the front door's windows as shown. (Fig. G1)
 - ➔ i. Use a piece of clear adhesive tape to lift the labels off of their protective backing sheet.
 - ➔ ii. Do not touch the adhesive surface of the warning labels

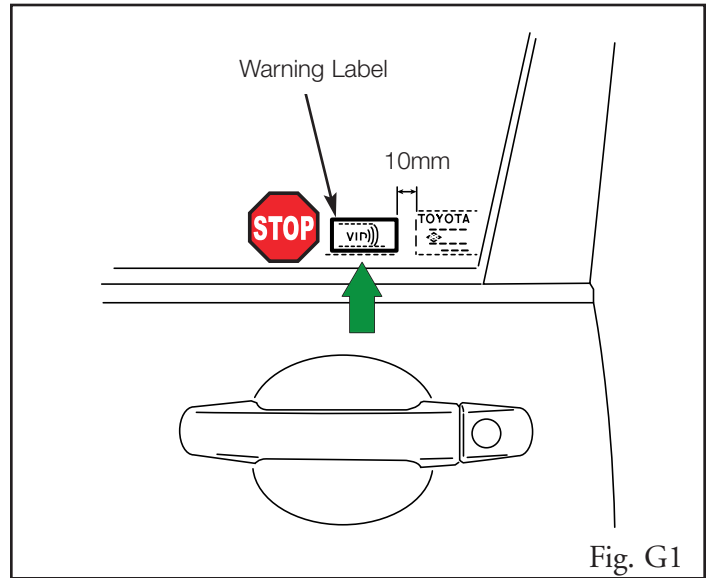


Fig. G1

H. Completing the Installation

- 1. Complete the reassembly of the vehicle.
 - ➔ i. Reconnect any disconnected connectors.
 - ➔ ii. Verify the panels fit together properly with no uneven gaps between them.
- 2. Clean up and remove any trash.
- 3. Reconnect the vehicle's negative battery cable. (Fig.H1)
 - ➔ i. Position the negative terminal at an angle of $90^\circ(\pm 10^\circ)$ to the battery as shown.
 - ⚠ ii. Tighten the nut with 36in.•lbs of torque.
 - ⊕ iii. Be careful to not touch the positive battery terminal.

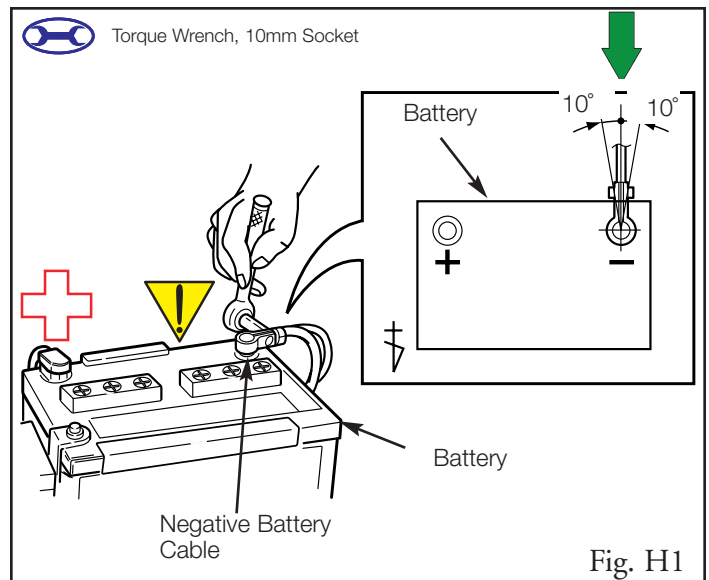


Fig. H1



Section III - Functional Verifications

Check: _____

- Press and release the remote control's lock button to start the system's arming process.
- Wait 30 seconds
- Press and release the remote control's unlock button to disarm the system.

Open the driver's door, insert the key into the ignition switch and turn it to "ON". Roll down all the windows, remove the key and exit the vehicle.

- Arm and disarm the system with the remote again, then wait thirty seconds.
- Press and release the remote control's unlock button again to stop the arming process.
- Insert the key into the driver's door key cylinder and turn it toward the front of the vehicle to start the arming process.
- Wait 30 seconds.
- Reach inside and manually unlock the driver's door to trigger an alarm.

Look for: _____

The tail and marker lights flash once.
All doors lock.
The Status Monitor's LED lights up.

After 30 seconds, the Status Monitor's LED starts flashing; the system is now armed.

The tail and marker lights flash twice.
The driver's door unlocks.
The Status Monitor's LED stops flashing.

The doors automatically relock.
The system automatically starts the arming process.

Same as before.

All doors lock.
The Status Monitor's LED lights up.

After 30 seconds, the Status Monitor's LED starts flashing; the system is now armed.

The driver's door automatically relocks.
The horn sounds repeatedly.
The headlights flash repeatedly.
The tail and marker lights flash repeatedly.
The Status Monitor's LED lights up.



Section III - Functional Verifications

Check:

Manually unlock the driver's door again and hold it unlocked, open the door, then sit in the driver's seat.

Insert the key into the ignition switch and turn it to "START" to stop the alarm.

Turn the key back to "LOCK", remove it, then exit the vehicle.

With the door open, press the lock switch on the door to lock the doors, then close the door to start the system's arming process.

Wait 30 seconds.

Reach inside and manually unlock the front passenger's door to trigger an alarm.

Press and release the remote control's unlock button to stop the alarm.

Press and release the remote control's lock button to start the system's arming process.

Go to the back of the vehicle and unlock the back door to stop the arming process.

Look for:

The driver's door lock attempts to lock repeatedly.

The horn continues to sound repeatedly.

The headlights, tail lights and marker lights continue flashing.

The Status Monitor's LED remains on.

The horn stops sounding.

All the lights stop flashing.

The Status Monitor's LED turns off.

The starter cranks and the engine starts.

Same as before.

After 30 seconds, the Status Monitor's LED starts flashing; the system is now armed.

The front passenger's door automatically relocks.

The horn sounds repeatedly.

The headlights flash repeatedly.

The tail and marker lights flash repeatedly.

The Status Monitor's LED lights up.

Same as before.

Same as before.

The Status Monitor's LED turns off.



Section III - Functional Verifications

Check: _____

Look for: _____

Climb into the rear passenger area, then close the door.

- Press and release the remote control's lock button to start the system's arming process, then wait 30 seconds until the system is armed.
- Unlock *and open* one of the rear passenger doors to trigger an alarm.
- Repeat the above steps with the other rear passenger door (if equipped.)

Same as before.

Same as before.


Same as before.

Roll up all windows, remove the key and exit the vehicle.


- Press and release the remote control's lock button to start the arming process.
- Wait 30 seconds.

Same as before.

After 30 seconds, the LED starts flashing; the system is now armed.

-  Pull the plunger on the striker tool about 1/3 to 1/2 way out, then release it to strike the center of the driver's door window.

The alarm should not be triggered.

-  Pull the plunger all the way out to tap the center of the driver's door windows again to trigger an alarm.

Same as before.

Note: If you do not disarm the system, the alarm will last 20 seconds. *It is not necessary to check the alarm duration.*

- Insert the key into the driver's door key cylinder and turn it toward the back of the vehicle to stop the alarm.

Same as before.

Section IV: Process/Audit Criteria



Audited during accessory installation
Paragraph numbers refer to paragraph numbers in Section II



Audited on completed vehicle installation

Part Number: 08586-48010

A. Vehicle Disassembly

1. Remove the negative battery cable. (Fig. A1)



i. Protect the fender before starting.



ii. Be careful to not touch the positive terminal.

2. Remove the passenger's step cover. (Fig. A2)



i. Cover the floor and seats before starting.



ii. Do not scratch the cover.

3. Remove the passenger's cowl cover. (Fig. A3)



ii. Do not scratch the cover.

5. Remove the glove box. (Fig. A5)



ii. Do not scratch the glove box.

6. Remove the glove box inner cover. (Fig. A6)



iii. Do not scratch the dash panel.



iv. Do not pull on the wires; pull on the connector.

7. Remove the passenger side panel. (Fig. A7)



ii. Do not scratch the cover.

8. Remove the driver's step cover. (Fig. A8)



i. Cover the floor and seats before starting.



ii. Do not scratch the cover.

9. Remove the driver's cowl cover. (Fig. A9)



ii. Do not scratch the cover.

10. Remove the driver side panel. (Fig. A10)



ii. Do not scratch the cover.

11. Open the screw cover from the lower dash cover.
(Fig. A11)




i. Do not scratch the cover.

Section IV: Process/Audit Criteria

Process   

Audited during accessory installation

Paragraph numbers refer to paragraph numbers in Section II

Audit 

Audited on completed vehicle installation

12. Remove the hood release latch. (Fig. A11)



ii. Do not scratch the cover.

13. Remove the lower dash cover. (Fig. A12)



ii. Do not scratch the cover.

14. Remove the metal substructure. (Fig. A13)



ii. Be careful not to get cut by the sharp metal edges.

15. Remove the two screws, located behind the steering wheel, securing the bottom steering column cover. (Fig. A14)



i. Do not scratch the cover.



ii. Insert the key into the ignition switch and turn it to ON, then turn the steering wheel left or right to gain access to the screws.

16. Remove the lower steering column cover. (Fig. A15)



ii. Do not scratch the cover.

17. Remove the cover from the back door trim as shown. (Fig. A16)



i. Do not scratch the cover.

18. Remove the bolt from the back door trim. (Fig. A16)



i. Do not scratch the cover.

19. Remove the back door trim. (Fig. A17)



i. Insert the nylon panel removal tool between the back door and back door trim to pry out.



ii. Do not scratch the cover.

Section IV: Process/Audit Criteria



Audited during accessory installation

Paragraph numbers refer to paragraph numbers in Section II



Audited on completed vehicle installation

B. Key Cylinder Switch Installation

2. Slide the key cylinder switch onto the back door's key cylinder. (Fig. B2)



- i. Do not force the switch onto the back door's key cylinder; it only fits one way.



- ii. Insert the key into the key cylinder and turn it to verify the switch is engaged.

3. Plug in the key cylinder switch's 2P connector into the vehicle harness' 2P connector. (Fig. B3)



- i. Verify the connector's are plugged in securely.

C. V5 Harness Installation

1. Locate and disconnect the gray 7P connector and white 14P connector from the driver side cowl area. (Fig. C1)



- i. Do not pull on the wires; pull on the connector.

2. Plug in the V5 harness' gray 7P connectors between the vehicle harness' gray 7P connector and the driver side connector block. (Fig. C2)



- i. Verify the connectors are plugged in securely.

3. Plug in the V5 harness' white 14P connectors between the vehicle harness' white 14P connector and the driver side connector block. (Fig. C2)



- i. Verify the connectors are plugged in securely.



4. Wrap the white 14P connectors with a large strip of foam tape. (Fig. C3)



5. Wrap the gray 7P connectors with a small strip of foam tape. (Fig. C3)

Section IV: Process/Audit Criteria










Process   

Audited during accessory installation

Paragraph numbers refer to paragraph numbers in Section II

Audit 

Audited on completed vehicle installation

7. Plug in the V5 harness' white 3P connector into the vehicle's white 3P connector. (Fig. C5)
 -  i. Verify the connectors are plugged in securely.
-  8. Wrap the white 3P connectors with a small strip of foam tape. (Fig. C6)
-  9. Secure the V5 harness with the vehicle's existing clip. (Fig. C7)
10. Secure the V5 harness' 14P connector and 7P connector to the vehicle's harness with one small wire tie. (Fig. C7)
 -  i. Clip the wire tie.
11. Route the V5 harness up toward the Instrument Panel J/B, then secure it to the vehicle's harness with one small wire tie. (Fig. C8)
 -  i. Clip the wire tie.
12. Locate and disconnect the white 3P connector from the driver side cowl area. (Fig. C9)
 -  i. Do not pull on the wires; pull on the connector.
13. Plug in the V5 harness' white 3P connectors into the vehicle's white 3P connectors. (Fig. C10)
 -  i. Verify the connectors are plugged in securely.
14. Looking up from the back of the Instrument Panel J/B, route the V5 harness toward the Instrument Panel J/B, then secure it to the vehicle's harness with two small wire ties. (Fig. C11)
 -  i. Clip the wire ties.
15. Route the V5 harness toward the steering column area, then secure it to the vehicle's harness with two small wire ties. (Fig. C12)
 -  i. Clip the wire ties.

Section IV: Process/Audit Criteria

Process   

Audit 


Audited during accessory installation

Audited on completed vehicle installation

Paragraph numbers refer to paragraph numbers in Section II

16. Route the V5 harness up toward the cluster panel area, then secure it to the vehicle's harness with one small wire tie. (Fig. C13)


 i. Clip the wire tie.

 17. Wrap the V5 harness' relay to the vehicle harness with a large strip of foam tape. (Fig. C14)


18. Secure the V5 harness to the vehicle harness with two small wire ties. (Fig. C14)

 i. Clip the wire ties.

19. Locate and disconnect the white 4P connector from the ignition switch. (Fig. C15)

 i. Do not pull on the wires; pull on the connector.

20. Plug in the V5 harness' white 4P connectors between the vehicle harness' white 4P connector and the ignition switch. (Fig. C16)

 i. Verify the connectors are plugged in securely.


21. Secure the V5 harness to the vehicle harness with one small wire tie. (Fig. C17)

 i. Clip the wire tie.

22. Secure the white 4P connectors to the vehicle harness with one small wire tie. (Fig. C17)

 i. Clip the wire tie.

23. Route the V5 harness toward the center console area, then secure it to the brace shown with one small wire tie. (Fig. C18)

 i. Insert a small wire tie through the hole in the brace, then secure the V5 harness with the small wire tie.

 ii. Clip the wire tie.

Section IV: Process/Audit Criteria

Process   


Audited during accessory installation

Paragraph numbers refer to paragraph numbers in Section II


Audit 


Audited on completed vehicle installation


24. Route the V5 harness toward the center console area, then secure it to the driver side center brace with one small wire tie. (Fig. C19)

 i. Insert a small wire tie through the hole in the driver side center brace, then secure the V5 harness with the small wire tie.

 ii. Clip the wire tie.


 iii. Route the V5 harness away from any moving parts such as levers, etc.


 25. Route the V5 harness behind the center console, through the opening between the heater unit and floor. (Fig. C20)


 i. Route the V5 harness away from any moving parts such as levers, etc.

26. Route V5 harness from behind the center console on the passenger side, then secure it to the vehicle harness with one small wire tie. (Fig. C21)


 i. Clip the wire tie.


 ii. Route the V5 harness away from any moving parts such as levers, etc.

 27. Route the V5 harness up toward the instrument panel, then secure it to the passenger side heater unit with two small strips of foam tapes. (Fig. C22)

 i. Route the V5 harness away from any moving parts such as levers, etc.

28. Route the V5 harness up toward the instrument panel. (Fig. C23)

 i. Route the V5 harness' dark gray 26P connector around the back of the metal reinforcement.

 ii. Route the V5 harness away from any moving parts such as levers, etc.

Section IV: Process/Audit Criteria

Process   

Audited during accessory installation

Paragraph numbers refer to paragraph numbers in Section II

Audit 

Audited on completed vehicle installation

D. V5 ECUs Preparation and Installation

1. Turn the GBS adjustment screw on the GBS ECU to the "9" position. (Fig. D1)



- i. Adjust as necessary during the function verifications.

2. Insert the GBS ECU mounting bracket into the indicated bracket slot on the GBS ECU. (Fig. D2)



- i. Insert the mounting bracket into the correct slot; you have only one chance to install it properly.

3. Plug in the V5 harness' white 8P connector to the GBS ECU. (Fig. D3)



- i. Verify the connectors are plugged in securely.

4. Locate and remove the vehicle's existing nut from the passenger side center brace. (Fig. D4)



- i. Do not discard the nut.

5. Using the stud bolt and existing nut, secure the GBS ECU to the passenger side center brace in the center console area. (Fig. D5)



- i. Secure the GBS ECU as shown.

6. Secure the V5 harness to the vehicles harness with one small wire tie. (Fig. D6)



- i. Clip the wire tie.

7. Insert the V5 security ECU mounting bracket into the indicated bracket slot on the V5 security ECU. (Fig. D7)



- i. Insert the mounting bracket into the correct slot; you have only one chance to install it properly.

8. Plug in the V5 harness' dark gray 26P connector to the V5 security ECU. (Fig. D8)



- i. Verify the connectors are plugged in securely.

Section IV: Process/Audit Criteria

Process   

Audited during accessory installation

Paragraph numbers refer to paragraph numbers in Section II

Audit 

Audited on completed vehicle installation


10. Using the supplied bolt, secure the V5 Security ECU to the metal reinforcement. (Fig. D10)


 i. Secure the V5 Security ECU as shown.

11. Secure the V5 harness to the vehicles harness with one small wire tie. (Fig. D11)

 i. Clip the wire tie.


E. Microphone Installation


 2. Using 3M Prep Solvent -70, clean the area indicated on the back side of passenger side panel. (Fig. E2)


 i. Do not scratch the panel.


3. Remove the backing sheet, and secure the microphone to the back side of the passenger side panel. (Fig. E2)

 i. Secure the microphone as shown.


 ii. Do not touch the adhesive surface of the microphone.


 iii. Press the microphone to the passenger side panel firmly.


 4. Secure the microphone with a small strip of foam tape. (Fig. E3)

 i. Do not cover the opening of the microphone with the foam tape.

5. Plug in the V5 harness' white 2P connector to the microphone white 2P connector. (Fig. E4)

 i. Verify the connectors are plugged in securely.

 6. Secure the 2P connectors to the passenger side panel with a small strip of foam tape. (Fig. E4)

 7. Reinstall the passenger side panel. Ensure that the V5 harness does not interfere with moving parts.

Section IV: Process/Audit Criteria











Audited during accessory installation
 Paragraph numbers refer to paragraph numbers in Section II




Audited on completed vehicle installation

F. Status Monitor Installation

FOR VEHICLE WITHOUT IMMOBILISER SYSTEM ONLY. (Step 1 - 4)

1. Remove the knockout cover from the far left space of the cluster panel. (Fig. F1)
 -  i. Do not perform this step if the vehicle has an immobiliser system.
 -  ii. Do not scratch the panel.
2. Plug in the V5 harness' white 2P connector to the Status Monitor. (Fig. F2)
 -  i. Do not perform this step if the vehicle has an immobiliser system.
 -  ii. Verify the connectors are plugged in securely.
3. Insert the Status Monitor into the knockout opening of the cluster panel. (Fig. F2)
 -  i. Do not scratch the panel.
 -  ii. Do not use the V5 harness' white 2P connector (male).
-  4. Wrap the unused V5 harness' white 2P connector (male) to the vehicle harness with one small strip of foam tape. (Fig. F3)
 -  i. Do not perform this step if the vehicle has an immobiliser system.

FOR VEHICLE WITH IMMOBILISER SYSTEM ONLY. (Step 5-8)

-  5. Locate the Security LED in the cluster panel. (Fig. F4)
 - i. Do not perform this step if the vehicle does not have an immobiliser system.

Section IV: Process/Audit Criteria

Process   

Audited during accessory installation

Paragraph numbers refer to paragraph numbers in Section II

Audit 

Audited on completed vehicle installation

6. Disconnect the vehicle harness from the Security LED's white 2P connector. (Fig. F4)



i. Do not remove the Security LED.



ii. Be careful not to get cut by the sharp metal edge.



iii. Do not pull on the wires; pull on the connector.

7. Plug in the V5 harness' white 2P connectors between the vehicle harness' white 2P connector and the Security LED. (Fig. F5)



i. Do not perform this step if the vehicle does not have an immobiliser system.



ii. Verify the connectors are plugged in securely.



iii. Be careful not to get cut by the sharp metal edge.



8. Secure the white 2P connectors to the vehicle harness with one small strip of foam tape. (Fig. F6)



i. Do not perform this step if the vehicle does not have an immobiliser system.

G. Warning Label Installation



1. Clean the inside surface of the front door's windows. (Fig. G1)



2. Place the warning label on the inside surface of the front door's windows as shown. (Fig. G1)



i. Use a piece of clear adhesive tape to lift the labels off of their protective backing sheet.



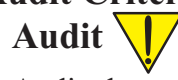
ii. Do not touch the adhesive surface of the warning labels

Section IV: Process/Audit Criteria



Audited during accessory installation

Paragraph numbers refer to paragraph numbers in Section II



Audited on completed vehicle installation

H. Completing the Installation

1. Complete the reassembly of the vehicle.



i. Reconnect the disconnected connectors.



ii. Verify the panels fit together properly with no uneven gaps between them.

3. Reconnect the vehicle's negative battery cable. (Fig.H1)



i. Position the negative terminal at an angle of 90°(±10°) to the battery as shown.



iii. Be careful not to touch the positive battery terminal.



3. ii. Tighten the nut with 36in.·lbs of torque.